

SHARE YOUR VIEW ON OUR FUTURE

Feedback must be received by 4pm Monday 23 April 2018.
Please read the consultation document before providing your feedback. You can get your feedback to us in the following ways:

EMAIL ltp@swdc.govt.nz
ONLINE www.swdc.govt.nz
FAX (06) 306 9373

BY POST
South Wairarapa District Council
PO Box 6
Martinborough 5741

IN PERSON Drop this form to your local library or the Council office in Martinborough

Your name and feedback will be public documents. All other personal details will remain private.

NAME Co-Design Architects Ltd (Steve Patterson) and Ed Cooke

POS _____

EMAIL < _____ >

PHONE _____

RATEPAYER Urban Rural Commercial Non ratepayer

AGE: 15-24 25-34 35-44 45-54 55-64 65+

Yes I/we would like to speak to this submission:

SPEAKING PREFERENCE May 14th May 15th

Organisation: Co-Design Architects Ltd
(Only if authorised to submit on behalf of organisation, one submission per organisation)

Rates Affordability

Do you agree with the proposed overall average rates increase for the next 10 years, enabling the proposed expenditure outlined in this document?

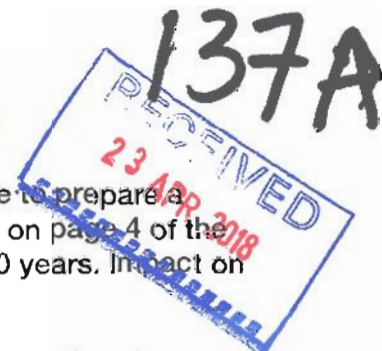
Agree Disagree

If not what general rates increase do you support?

3% (inflation only) 5 % Other _____

If you ticked 'disagree' which activity areas do you think we should spend less on?

Future growth and development



Option One: Do you support Council's initiative to prepare a spatial plan for the South Wairarapa as outlined on page 4 of the Consultation Document? Cost: \$300,000 over 10 years. Impact on rates: 0.23% per annum increase; or

Option Two: Continue to allow growth in an unstructured way. This option would have no immediate impact on rates, but could result in higher rates in the future due to less efficient use of Council resources than could be achieved with planned development.

Select your preferred option:

Option One Option Two

If you have any views on this project please comment below:

Please see 2x pdf file attached

Youth training and development

Option One: Do you support Council's initiative to provide grants to support youth training and development and to provide recreational activities as outlined on page 5 of the Consultation Document? Cost: \$75,000 per annum. Impact on rates: 0.57% per annum increase; or

Option Two: Status quo with no impact on rates.

Select your preferred option:

Option One Option Two

If you have any views on this project please comment below:

Promoting and enhancing our district

Option One: Do you support Council's initiative to promote and enhance our district as outlined on page 5 of the Consultation Document? Cost: 300,000 over 10 years. Impact on rates: 0.23% per annum increase; or

Option Two: Status quo with no impact on rates; or

Option Three: Proceed with annual expenditure at a level other than that proposed. Amount: \$ _____

Select your preferred option:

Option One Option Two Option Three

If you have any views on this project please comment below:

Infrastructure for visitors

Option One: Do you support Council's initiative to provide more infrastructure for visitors (e.g. more public toilets, drinking fountains, motor caravan dumping stations, better rubbish and recycling facilities) as outlined on page 5 of the Consultation Document? Cost: \$50,000 per annum for 5 years. Impact on rates: 0.006% per annum increase; or

Option Two: Status quo with no impact on rates.

Select your preferred option:

Option One Option Two

If you have any views on this project please comment below:

Option One: Do you support central coordination of sport across the district as outlined on page 5 of the Consultation Document? Estimated cost of \$50,000 per annum (a further 0.38% per annum rates increase); or

Option Two: Status quo with no impact on rates.

Select your preferred option:

Option One Option Two

If you have any views on this project please comment below:

Reducing waste going to landfills

Council is considering the following changes, indicate which of the following you would support (costs not included in LTP budgets).

A Do you support provision of kerbside food waste collections? This service is estimated to cost \$73,000 per annum (a further 0.55% per annum rates increase). See page 6 of the Consultation Document for more detail.

Yes No

B Do you support provision of 240 litre wheelie bins for recycling? This service is estimated to cost \$32,000 per annum (a further 0.24% per annum rates increase). See page 6 of the Consultation Document for more detail.

Yes No

C Do you support provision of an e-waste service at transfer stations or an advertised collection service scheduled throughout the year? This service is estimated to cost \$7,000 per annum (a further 0.05% per annum rates increase). See page 6 of the Consultation Document for more detail.

Yes No

D Do you support provision of a recycling/recovery centre at a transfer station? This service is estimated to cost \$14,000 per annum (a further 0.11% per annum rates increase). See page 6 of the Consultation Document for more detail.

Yes No

These ideas are not mutually exclusive, you can support more than one. These ideas are not included in the current rates increase of 5.99% in year one.

If you have any views on these ideas please comment below:



Water conservation

Council is considering ways to conserve water.

Option One: Do you support undertaking a feasibility study to investigate ways to reduce water usage or increase water storage? The study is estimated to cost \$50,000 (a further 0.38% per annum rates increase for the 2018/19 year only). See page 6 of the Consultation Document for more detail; or

Option Two: Do you support continuation of Council's current approach to water conservation i.e. encouraging users to reduce their water usage as outlined on page 6 of the Consultation Document?; or

Option Three: What other options would you like Council to investigate to conserve water in our district?

Select your preferred option:

Option One Option Two Option Three

Option Three:

If you have any views on these ideas please comment below:

Fees and charges

Do you have any comments about the proposed changes to fees and charges as outlined on page 14 of the Consultation Document?

Grants

If you are applying for a grant please complete the grant application form which is available on our website or at the addresses listed at the top of this form.

Other feedback

Council would like to hear any other feedback you have in relation to the content of the Consultation Document or any of the LTP supporting information or anything you think needs to be included that is not.

Please provide any other comments below:

Please see 2x pdf files attached

- o Concept for a lively town centre
i.e. CDD Drawings 101-108
- o LTP Submission 2018-2028 by
Co-Design Architects (pp 1-15)

(Continue on another sheet if required)

137B

Long Term Plan 2018-2028

South Wairarapa District Council
23th April 2018

Submission
Co-Design Architects Ltd

Contents

- Introduction
- Greytown – The most beautiful *and* sustainable town in NZ
- Develop the Centre – See CDA Drawings #101 - 108
- Summary

12/18

Sustainable Urban Form for Tomorrow

Global Greenhouse Gas Emissions Data

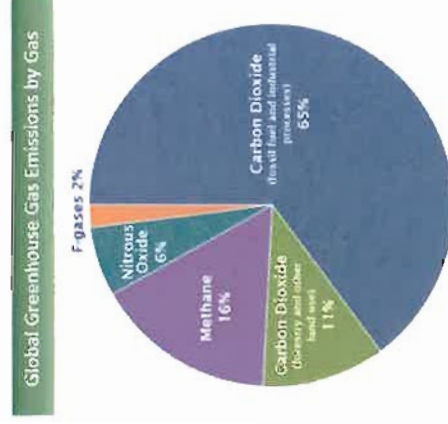
On This Page:

- [Global Emissions by Gas](#)
- [Trends in Global Emissions](#)
- [Global Emissions by Economic Sector](#)
- [Emissions by Country](#)

Global Emissions by Gas

At the global scale, the key greenhouse gases emitted by human activities are:

- **Carbon dioxide (CO₂):** Fossil fuel use is the primary source of CO₂. CO₂ can also be emitted from direct human-induced impacts on forestry and other land use, such as through deforestation, land clearing for agriculture, and degradation of soils. Likewise, land can also remove CO₂ from the atmosphere through reforestation, improvement of soils, and other activities.
- **Methane (CH₄):** Agricultural activities, waste management, energy use, and biomass burning all contribute to CH₄ emissions.
- **Nitrous oxide (N₂O):** Agricultural activities, such as fertilizer use, are the primary source of N₂O emissions. Fossil fuel combustion also generates N₂O.
- **Fluorinated gases (F-gases):** Industrial processes, refrigeration, and the use of a variety of consumer products contribute to emissions of F-gases, which include hydrofluorocarbons (HFCs), perfluorocarbons (PFCs), and sulfur hexafluoride (SF₆).

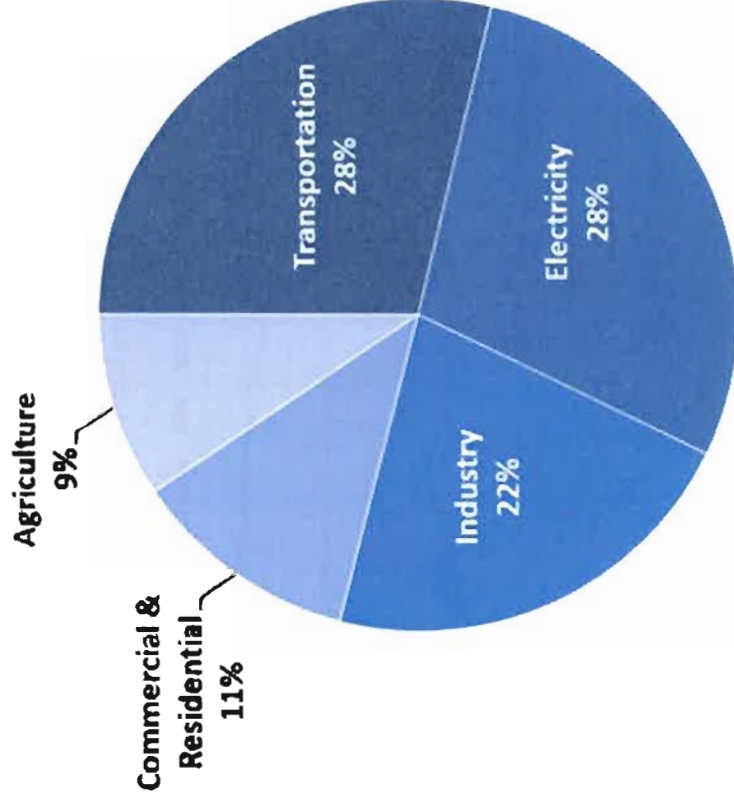


Source: IPCC (2014) based on global emissions from 2010. Details about the sources included in these estimates can be found in the [Contribution of Working Group III to the Fifth Assessment Report of the Intergovernmental Panel on Climate Change](#).

Transportation Choices

617

Total U.S. Greenhouse Gas Emissions by Economic Sector in 2016

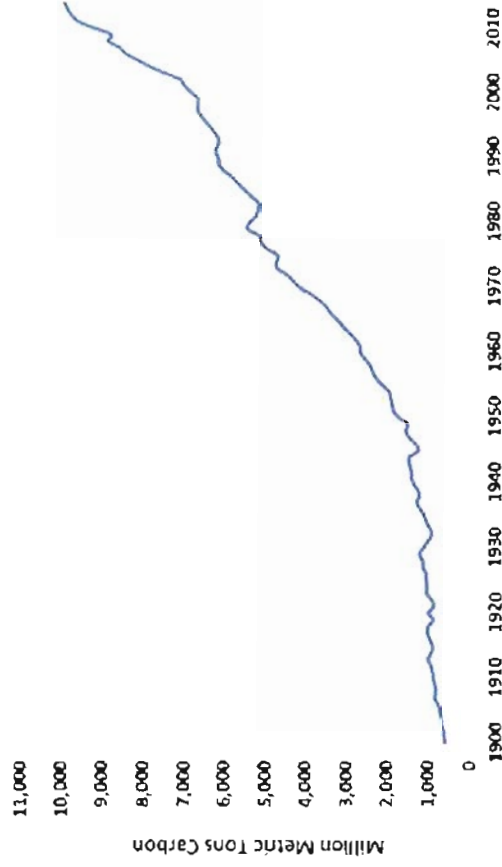


Total Emissions in 2016 = 6,511 [Million Metric Tons of CO₂ equivalent](#)

Carbon Emissions from Fossil Fuels

Trends in Global Emissions

Global Carbon Emissions from Fossil Fuels, 1900-2014



Source: Boden, T.A., Marland, G., and Andres, R.J. (2017). [Global, Regional, and National Fossil-Fuel CO2Emissions](#). Carbon Dioxide Information Analysis Center, Oak Ridge National Laboratory, U.S. Department of Energy, Oak Ridge, Tenn., U.S.A. doi 10.3334/CDIAC/00001_V2017.

Global carbon emissions from fossil fuels have significantly increased since 1900. Since 1970, CO₂ emissions have increased by about 90%, with emissions from fossil fuel combustion and industrial processes contributing about 78% of the total greenhouse gas emissions increase from 1970 to 2011. Agriculture, deforestation, and other land-use changes have been the second-largest contributors.

Consensus on Sustainable Urban Form

STEPHEN JOHN PATTONSON

Table 3: Five Principles for Multivalent Communal Space and Sustainable Neighbourhood Form. (Source: S. J. Pattinson, Adapted from Frey, in The Urban Design Reader 2007, 339-340)

Commonly Agreed Criteria for a More Sustainable City Form (from Frey, in The Urban Design Reader 2007, 339-340)	Community agreed sustainability criteria for the city and city region	Pattinson uses for communal space (see list on page 11, 13)	Five principles for multivalent communal space:
Human needs (based on Maslow)	<ul style="list-style-type: none"> some form of containment/sprawl mixed use (development at public transport nodes in walking and cycling distance from housing) ... to ... generate a vibrant environment a reasonably tight population density to achieve viable local services and facilities ... and viable public transport 	<ul style="list-style-type: none"> a place to live/work/transport (mobility) access to services and facilities 	<ul style="list-style-type: none"> walkable neighbourhoods (reduced dependence on private cars for access to shops, amenities and recreation)
Physical needs			

THE INTERNATIONAL JOURNAL OF ENVIRONMENTAL, CULTURAL, ECONOMIC AND SOCIAL SUSTAINABILITY

<ul style="list-style-type: none"> visually & functionally ordered environment . free of pollution and crime a place that is well designed, manageable a place that provides a sense of ... dignity 	<ul style="list-style-type: none"> a sense of cultural-ity and place access to green open spaces ... for recreation and sports, nature reserves, ... the provision of food manageability of neighbourhoods 	<ul style="list-style-type: none"> cluster houses to create open space safety, security (CPTED) community wards and gardens/food production provide neighbourhood-identity and attachment enhance environment, improve property values 	<ul style="list-style-type: none"> 2: clustered housing 3: shared green open spaces
<ul style="list-style-type: none"> a place where people have their roots and children their friends a sense of continuity and belonging to a place opportunity for communities to shape their own ... neighbour-hoods 	<ul style="list-style-type: none"> social mix ... [supported by] a wide range of dwelling & tenure types a degree of local autonomy; the ability of individuals and the community to shape their own environment according to their needs and aspirations ... [to] support if not generate a sense of place and community, a sense of belonging 	<ul style="list-style-type: none"> places for children places for teenagers inter-generational interaction and support social inclusion and interaction mental health and well-being express local autonomy 	<ul style="list-style-type: none"> 4: places for children and teenagers 5: sense of community
<ul style="list-style-type: none"> A conducive social environment A chance to be creative 			

The five proposed principles for multivalent communal space (see column 5 in Table 3 above) are summarised below (see also Tables 4.1-4.5):

Five Principles for Lively Neighbourhoods

1. **Walkable Neighbourhoods:** locate compact housing close to public transport and mixed-use centres to create vibrant, walkable neighbourhoods;
2. **Clustered Housing:** in these neighbourhoods, cluster the housing around shared open spaces;
3. **Green Open Space:** create multiple uses and meanings for these shared spaces, with residents participating in designing, developing and maintaining them;
4. **Children and Teenagers:** encourage children and teenagers to participate in the creation of shared spaces that meet their needs; and
5. **Sense of Community:** foster connectedness and a 'sense of community' by facilitating neighbourhood identity and attachment, pedestrianism, social interaction and local autonomy through the design of the physical environment.







Figure 9: Hypothetical redevelopment of Evergreen Crescent: 120 Detached Houses on Minimum 300m² lots

The five-hectare subdivision shown redeveloped to accommodate detached houses on minimum 300m² Lots. Colour Legend: Blue = 3-bdrm houses with double garages Pink = smaller houses with single garages (Source: S. J. Pattinson)



Figure 10: Hypothetical Redevelopment of Evergreen Crescent: 140 Houses Clustered Around Multivalent Open Spaces

Table 5: A Comparison of Closely-spaced Detached Housing (Fig. 9) with Attached Housing Clustered around Multivalent Communal Space (Fig. 10)

	Detached Houses on Minimum 300m² lots (Fig. 9)	Attached Housing Clustered Around Multivalent Communal Spaces (Fig. 10)¹
Overall area of development:	5 hectares	5 hectares
Total houses:	120	140
House types/sizes:	Less variety and choice	More variety and choice
Garaging:	Mostly single	Mostly double (possible storage, games, hobbies, guest room)
Number of stores:	1-2	2-3
Average lot size (approximate):	320m ²	140m ² (estimated) plus share in communal open spaces and facilities
Communal Open Spaces:	Nil (children play on roads)	<ul style="list-style-type: none"> orchard 1600m² communal gardens trees, biodiversity playing field 3,500m² tennis/basketball/volleyball courts park 1800m² landscaped pond (by café & comm. centre) community centre, café, youth centre, early childhood facilities, etc. as a focal point for the Neighbourhood¹ identity/attachment social interaction local autonomy

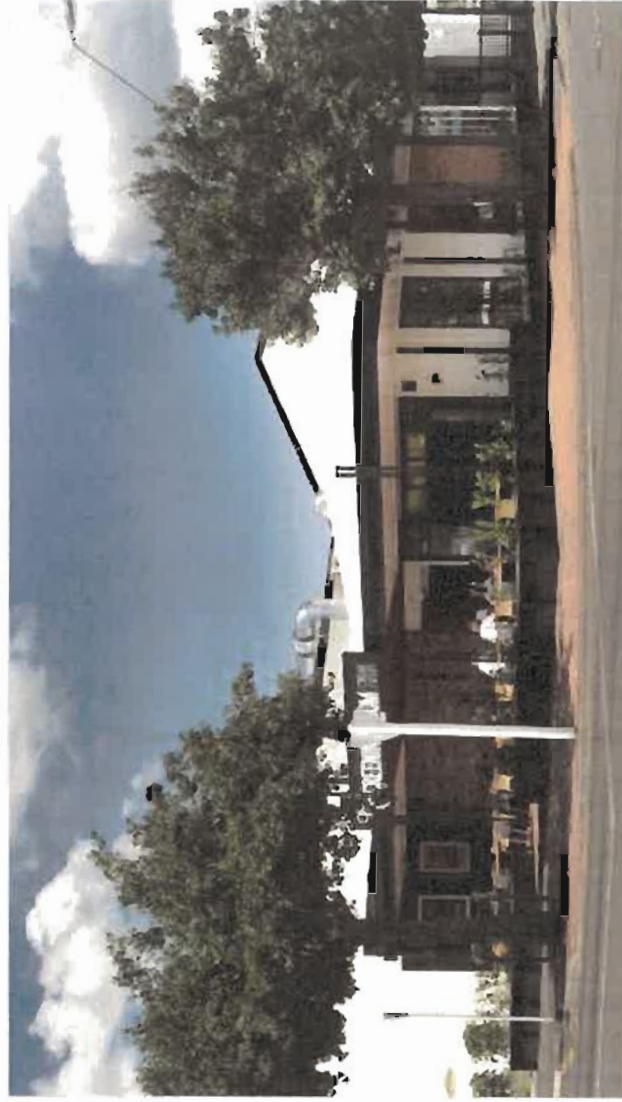
(Source: S.J. Pattinson)

Kuripuni Village,
described
by Chris Gollins
as "Masterton's
Parnell"

"increasing
sophistication and
growth" of the
Wairarapa

The two properties, one on the corner of King and Chapel streets in Masterton and the other on Queen St in Kuripuni Village, are owned by developer David Borman.

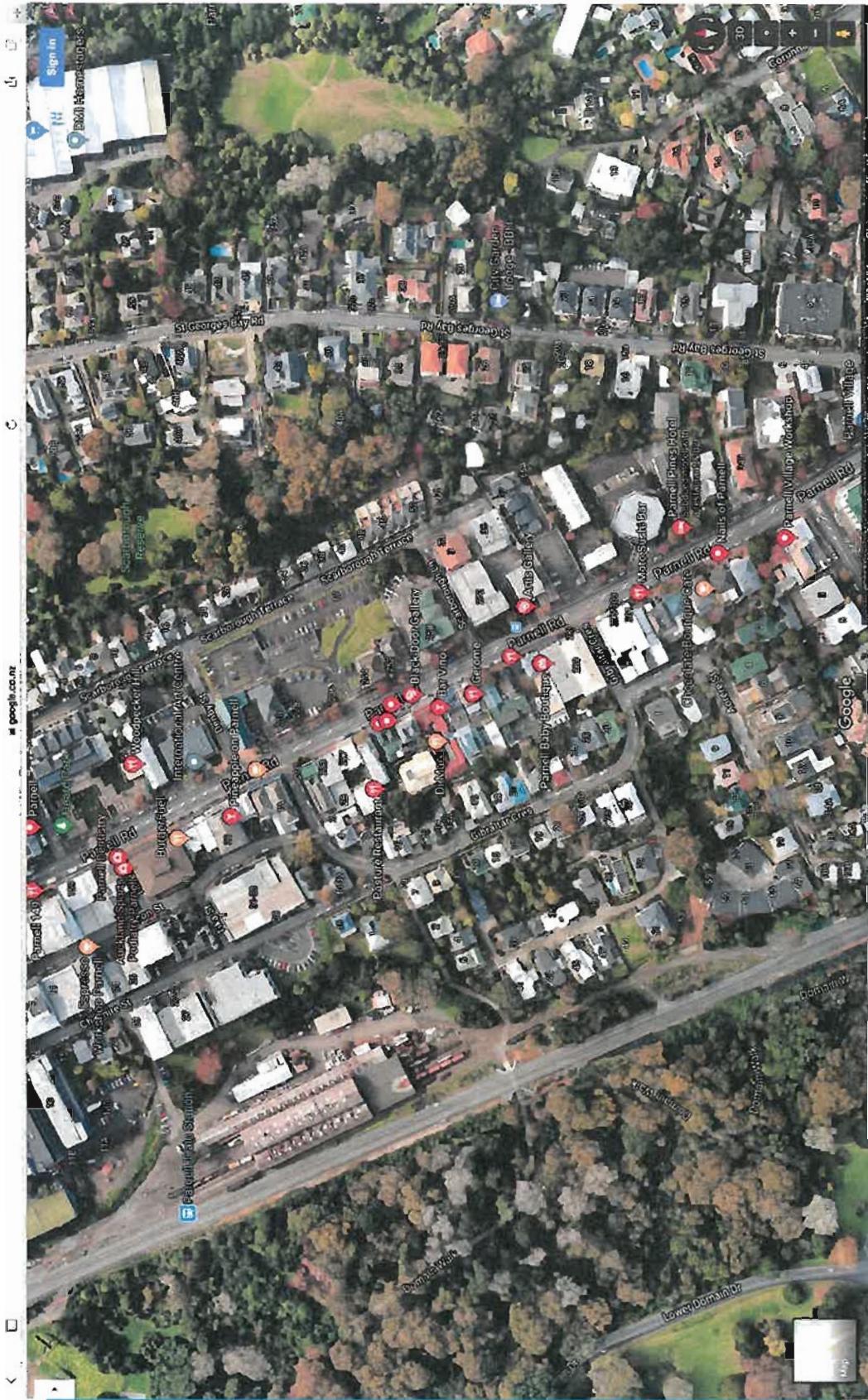
Gollins Commercial principal Chris Gollins said he expected strong interest in the buildings, as the "increasing sophistication and growth" of the Wairarapa appealed to New Zealand investors, as well as Chinese, English and New Caledonian investors.



The Screening Room building is home to two cinemas, a restaurant, cafe, bar. Its neighbour, which is part of the same complex, is a high-end furniture store.

SUPPLIED

Gollins said that in the past three years he had sold more than \$25 million of commercial property in the Wairarapa.



Parnell Village

"increasing sophistication and growth" of the Wairarapa

MIXED USE = THE KEY

"increasing
sophistication and
growth" of the
Wairarapa



High-rise apartments, Parnell, Auckland is a commercial and residential mixed use development



Gladstone Road, Parnell, Auckland uses residential and commercial mixed use development

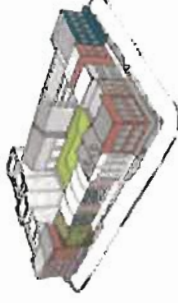


Commercial and residential mixed use development, Auckland

A mixed use development is defined in the revised Use Guide as one that contains both residential and non-residential uses. It may be of any scale, from a single building to an entire precinct or area. The dissimilar uses of a mixed use development may be arranged either vertically or horizontally, or as a combination of the two.



Examples of horizontal and vertical mixed use developments.



Example of a mixed use perimeter block

Greytown – The most
beautiful *and* most
sustainable town in NZ

for Today and Tomorrow

In Summary:

Explore a sustainable and lively urban form for future Greytown

Preserve Heritage

Preserve Orchards in Greytown Development Area

Develop a thriving town centre

PCL XL error
Error: ExtraData
Operator: ReadImage
Position: 5777

137B

Long Term Plan 2018-2028

South Wairarapa District Council
23th April 2018

Submission
Co-Design Architects Ltd

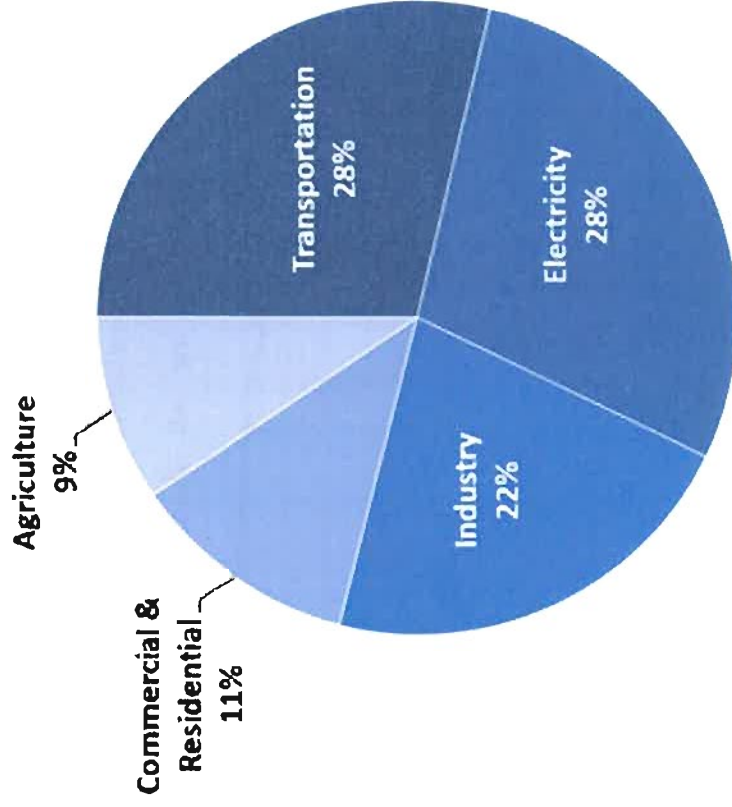
Sustainable Urban Form

for Tomorrow

Transportation Choices

632

Total U.S. Greenhouse Gas Emissions by Economic Sector in 2016



Total Emissions in 2016 = 6,511 [Million Metric Tons of CO₂ equivalent](#)

Consensus on Sustainable Urban Form

STEPHEN JOHN PATRINSON

Table 3: Five Principles for Multivalent Communal Space and Sustainable Neighbourhood Form. (Source: S. J. Patrinson, Adapted from Frey, In *The Urban Design Reader 2007*, 339-340)

Commonly Agreed Criteria for a More Sustainable City Form (from Frey, In <i>The Urban Design Reader 2007</i> , 339-340)	Sustainable Neighbourhood Form based on Principles for Multivalent Communal Space (S. J. Patrinson)
<p><i>Human needs (based on Maslow)</i></p> <p>If not a 'good' city, communities should provide</p>	<p><i>Potential uses and meanings for communal space (see list on pages 12, 13)</i></p> <p>Five principles for multivalent communal space</p>
<p><i>Physical needs</i></p> <ul style="list-style-type: none"> a place to live/work transport (mobility) access to services and facilities 	<ul style="list-style-type: none"> walkable neighbourhood that integrates outdoor spaces (reduced dependence on private cars for access to shops, recreation, amenities and services)
<ul style="list-style-type: none"> some form of containment/structure mixed use (developmental) concentrated public transport modes (walking and cycling distance from housing) ... to generate a vibrant environment a reasonably high population density to achieve viable local services and facilities ... and viable public transport 	<ul style="list-style-type: none"> walkable neighbourhood that integrates outdoor spaces (reduced dependence on private cars for access to shops, recreation, amenities and services)

THE INTERNATIONAL JOURNAL OF ENVIRONMENTAL, CULTURAL, ECONOMIC AND SOCIAL SUSTAINABILITY

<p><i>Subjective quality: planning (and manageable) environment</i></p> <ul style="list-style-type: none"> visually & functionally ordered environment, free of pollution and crime a place that is well designed, usable, provides a sense of ... dignity 	<ul style="list-style-type: none"> a sense of centrality and place access to green open spaces ... for recreation and sports, nature reserves ... the provision of food ... neighbourhoods a place that is well designed, usable, provides a sense of ... dignity 	<ul style="list-style-type: none"> cluster houses to create open space safety, security (CYTED) community orchards and gardens/food production provide neighbourhood identity and attachment enhance environment, improve property values 	<ul style="list-style-type: none"> 2: clustered housing 3: shared green open spaces
<p><i>A conducive social environment: A chance to be creative</i></p> <ul style="list-style-type: none"> a place where people have their roots and children their friends a sense of community and belonging to a place opportunities for communities to shape their own ... neighbourhoods 	<ul style="list-style-type: none"> social mix ... (supported by) a wide range of dwelling & tenure types a degree of local autonomy, the ability of individuals and the communities to shape their own environment according to their needs and aspirations ... [to] create a sense of community, a sense of belonging 	<ul style="list-style-type: none"> places for children places for teenagers inter-generational interaction and support social inclusion and interaction terrace mental health and well-being express local autonomy 	<ul style="list-style-type: none"> 4: places for children and teenagers 5: sense of community

The five proposed principles for multivalent communal space (see column 5 in Table 3 above) are summarised below (see also Tables 4.1-4.5):



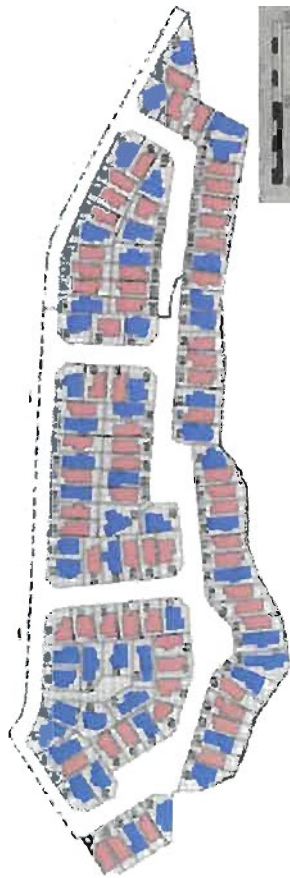


Figure 9: Hypothetical redevelopment of Evergreen Crescent: 120 Detached Houses on Minimum 300m² lots

The five-hectare subdivision shown redeveloped to accommodate detached houses on minimum 300m² Lots. Colour Legend: Blue = 3-bdnu houses with double garages Pink = smaller houses with single garages (Source: S. J. Pattinson)

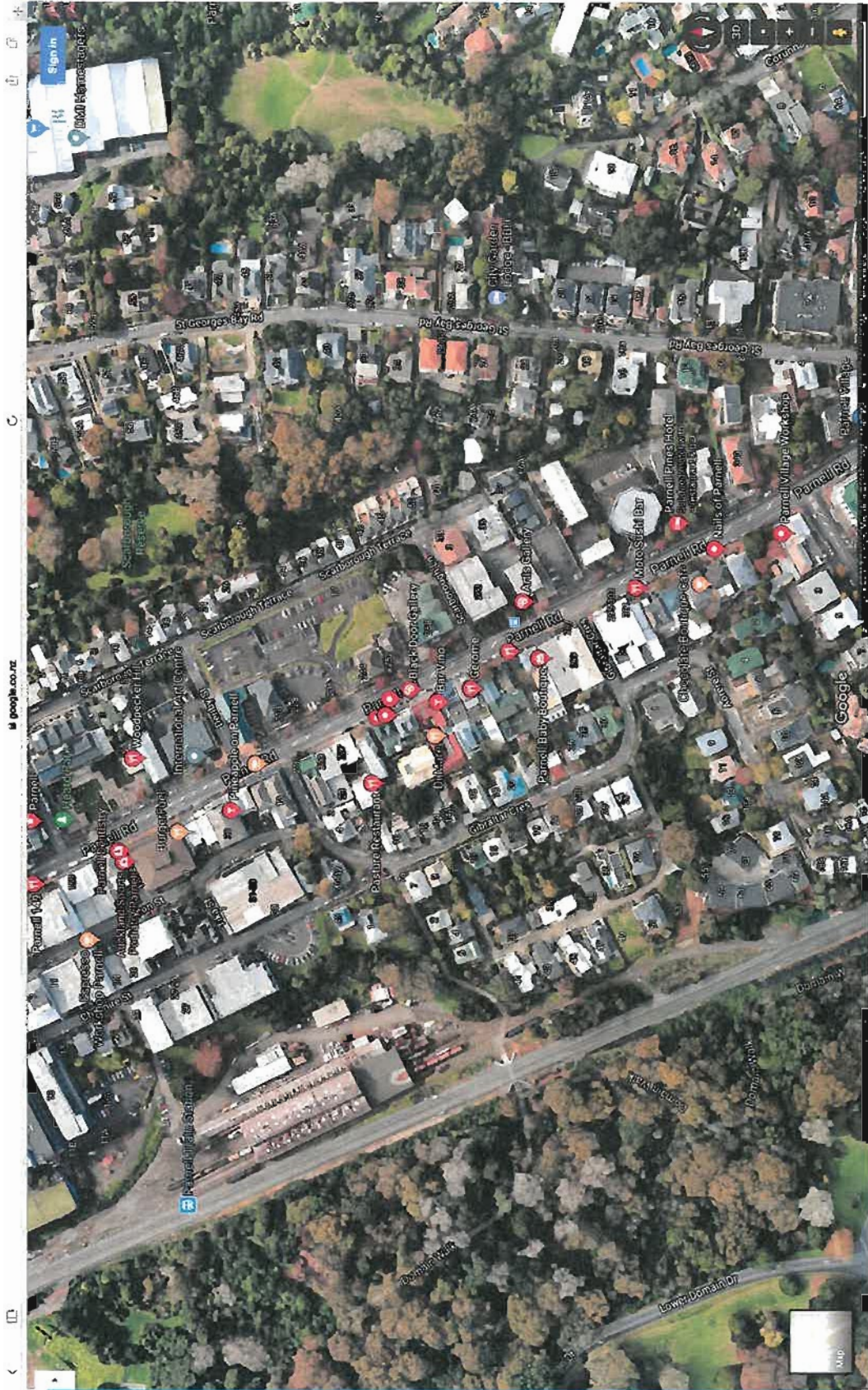


Figure 10: Hypothetical Redevelopment of Evergreen Crescent: 140 Houses Clustered Around Multivalent Open Spaces

Table 5: A Comparison of Closely-spaced Detached Housing (Fig. 9) with Attached Housing Clustered around Multivalent Communal Space (Fig. 10)

	Detached Houses on Minimum 300m ² lots (Fig. 9)	Attached Housing Clustered Around Multivalent Communal Spaces (Fig. 10) ¹
Overall area of development:	5 hectares	5 hectares
Total houses:	120	140
House types/sizes:	Less variety and choice	More variety and choice
Garaging:	Mostly single	Mostly double (possible storage, games, hobbies, guest room)
Number of storeys:	1-2	2-3
Average lot size (approximate):	320m ²	140m ² (estimated) plus share in communal open spaces and facilities
Communal Open Spaces:	Nil (children play on roads)	<ul style="list-style-type: none"> orchard 1600m² communal gardens tees, biodiversity playing field 3,500m² tennis/basketball/volleyball courts park 1800m² landscaped pond (by café & comm. centre) community centre, café, youth centre, early childhood facilities, etc. as a focal point for the Neighbourhood identity/attachment social interaction local autonomy

(Source: S.J. Pattinson)



Parnell Village

"increasing sophistication and growth" of the Wairarapa

Greytown – The most
beautiful *and* most
sustainable town in NZ

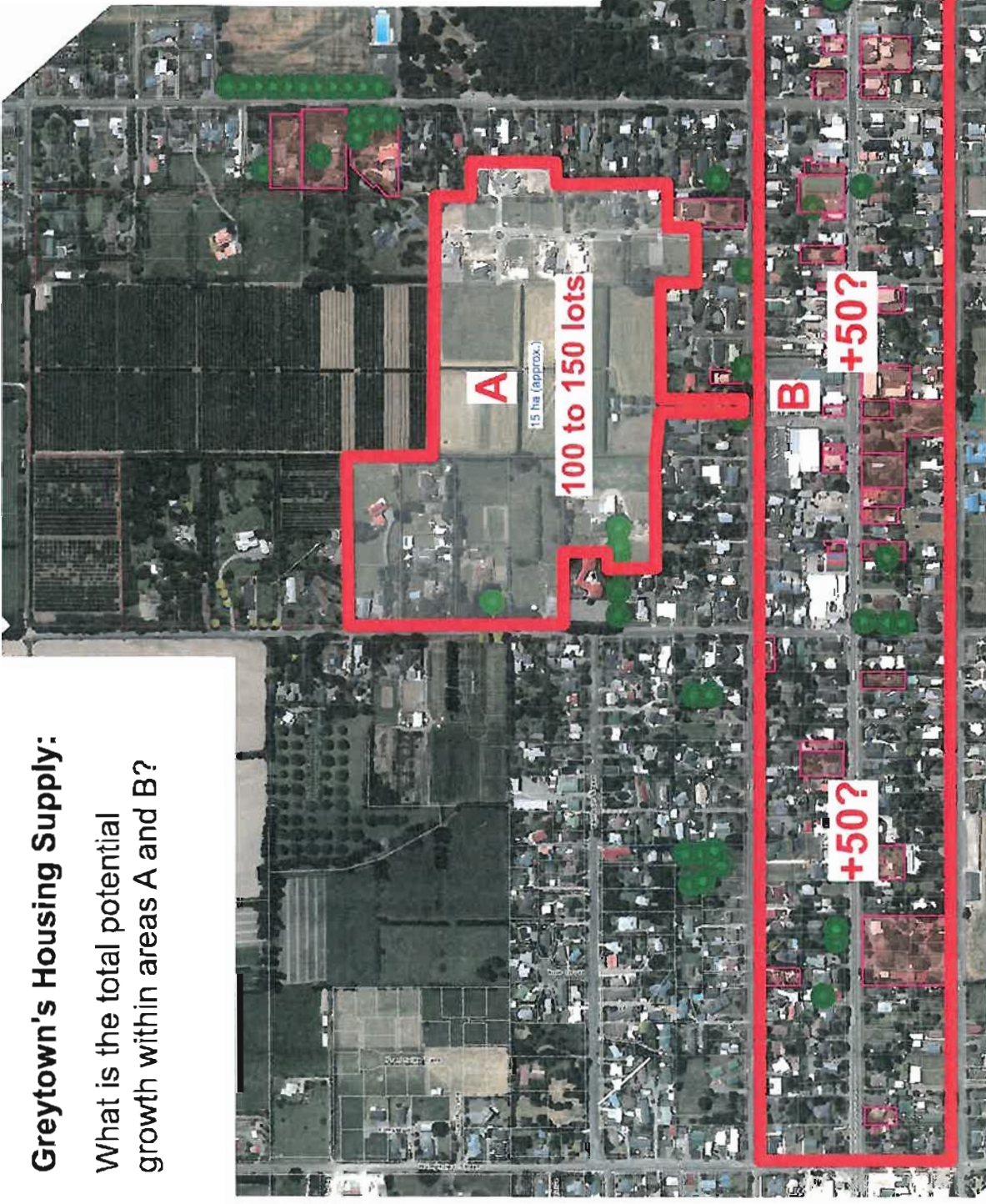
for Today and Tomorrow

PCL XL error
Error: ExtraData
Operator: ReadImage
Position: 5777

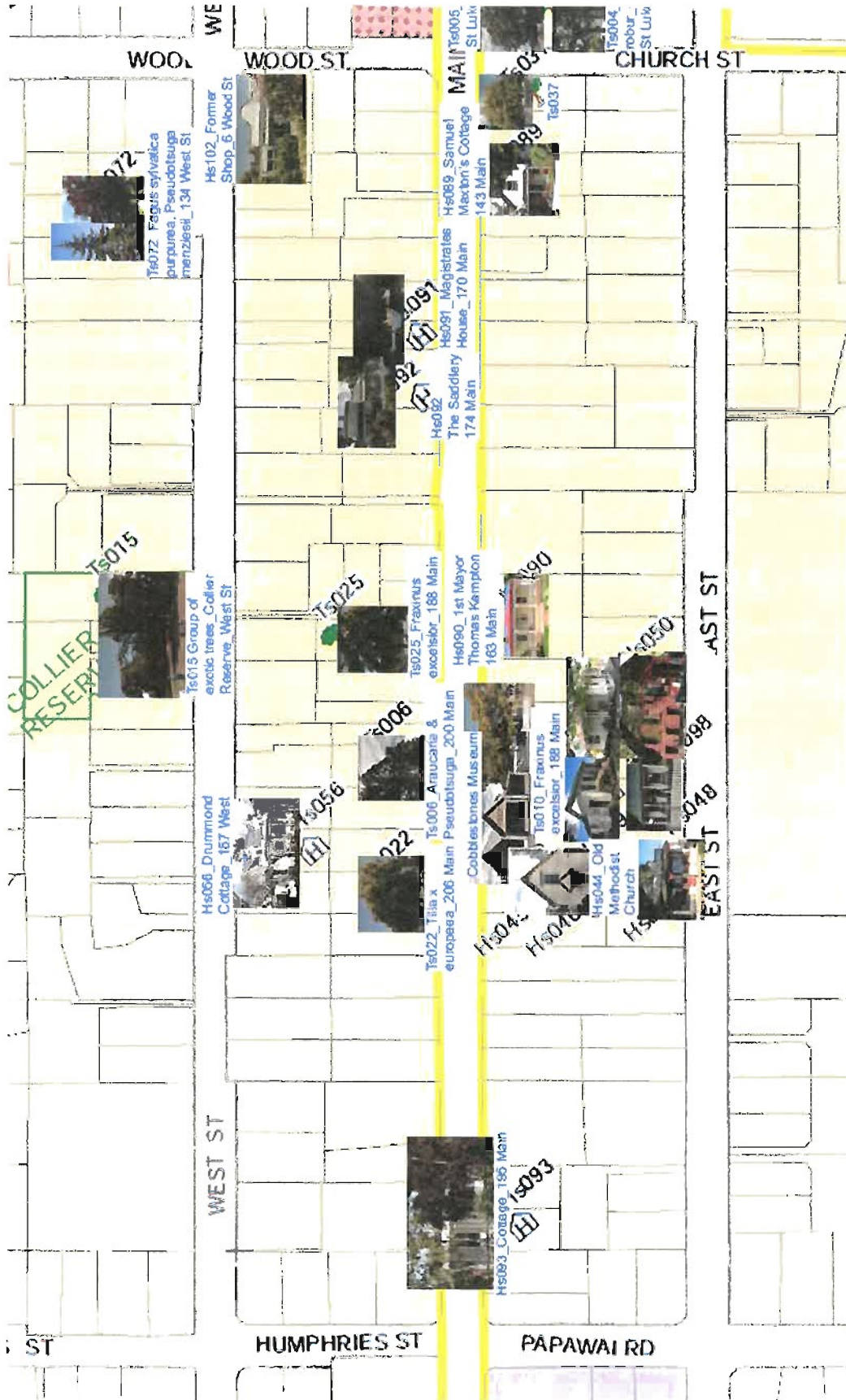
Greytown's Housing Supply:
 What is the total potential growth within areas A and B?

A: Within Area A -
 15 ha or 150,000m² (approx.)
 Less 20% for roads and reserves
 Assumed developable area is
 12 ha or 120,000m² (approx.)
 Say 80,000m² / 1,000m² = 80 lots
 Say 40,000m² / 750m² = 50 lots
 Say yield (Area A) = 100 to 150 lots

B: Within Area B (from Papawai to North St and from East to West St) -
 With carefully controlled mixed-use and development that is sensitive to and preserves heritage, what is the possible future yield of Area B?



co-design 27 Kings Crescent, Lower Hutt, ph(04) 838 8355 Box 48-070, Silverstream, Upper Hutt 5142		CONCEPT FOR A LIVELY & SUSTAINABLE TOWN For public discussion - SWDC Long Term Plan: Greytown © Co-Design Architects Ltd, April 2018 Date Issued: 23/04/18		Possible Greytown Development Area (GDA) Aerial View 1:5000		Not Yet for Construction	
Greytown Development Area (GDA) Aerial View		Scale: As shown @A3 size		Job No: 1615WD/101		Rev: 0	
CONCEPT FOR A LIVELY & SUSTAINABLE TOWN		For public discussion - SWDC Long Term Plan: Greytown		Issue		By	
© Co-Design Architects Ltd, April 2018		Date Issued: 23/04/18		Rev:		0	
Check at alternate on site before starting construction							



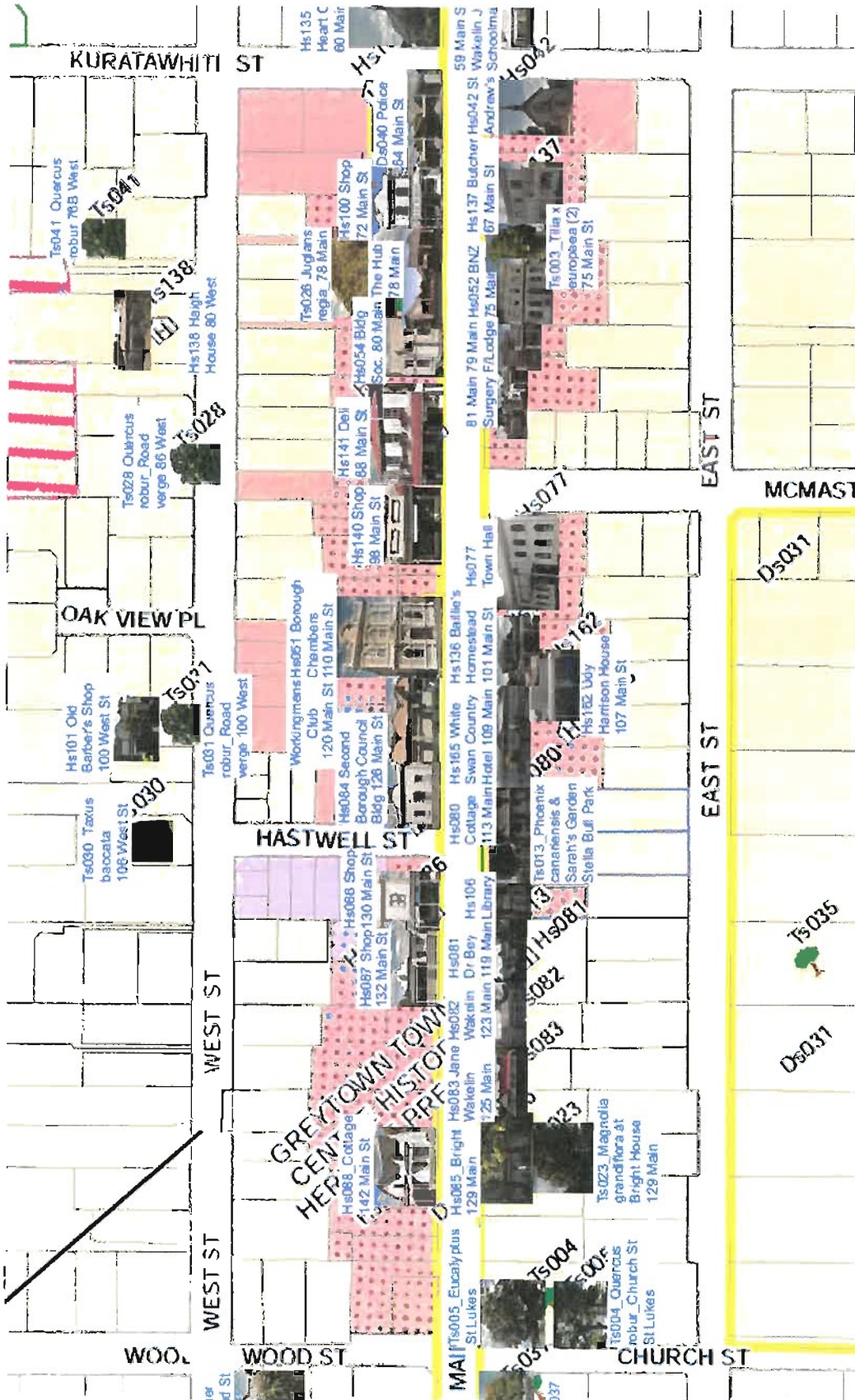
Papawai Rd to Wood St - Heritage Precinct
 1:2000
 Existing Heritage Precinct -
 Papawai Rd to Wood St

DRAFT
 Not Yet for Construction

CONCEPT FOR A LIVELY & SUSTAINABLE TOWN
 FOR PUBLIC DISCUSSION - SW/DC Long Term Plan: Greytown
 © Co-Design Architects Ltd, April 2013
 Site Image: 23/06/13

co-design architects
 27 Kings Canyon, Lower Hutt, P.O. Box 4585
 04-48-070, Shareline, Upper Hut, 5142

Rev	Date	By
1	23/06/13	SW/DC
2	10/15/13	102



Wood St to Kuratawhiti St - Heritage Precinct 1:2000

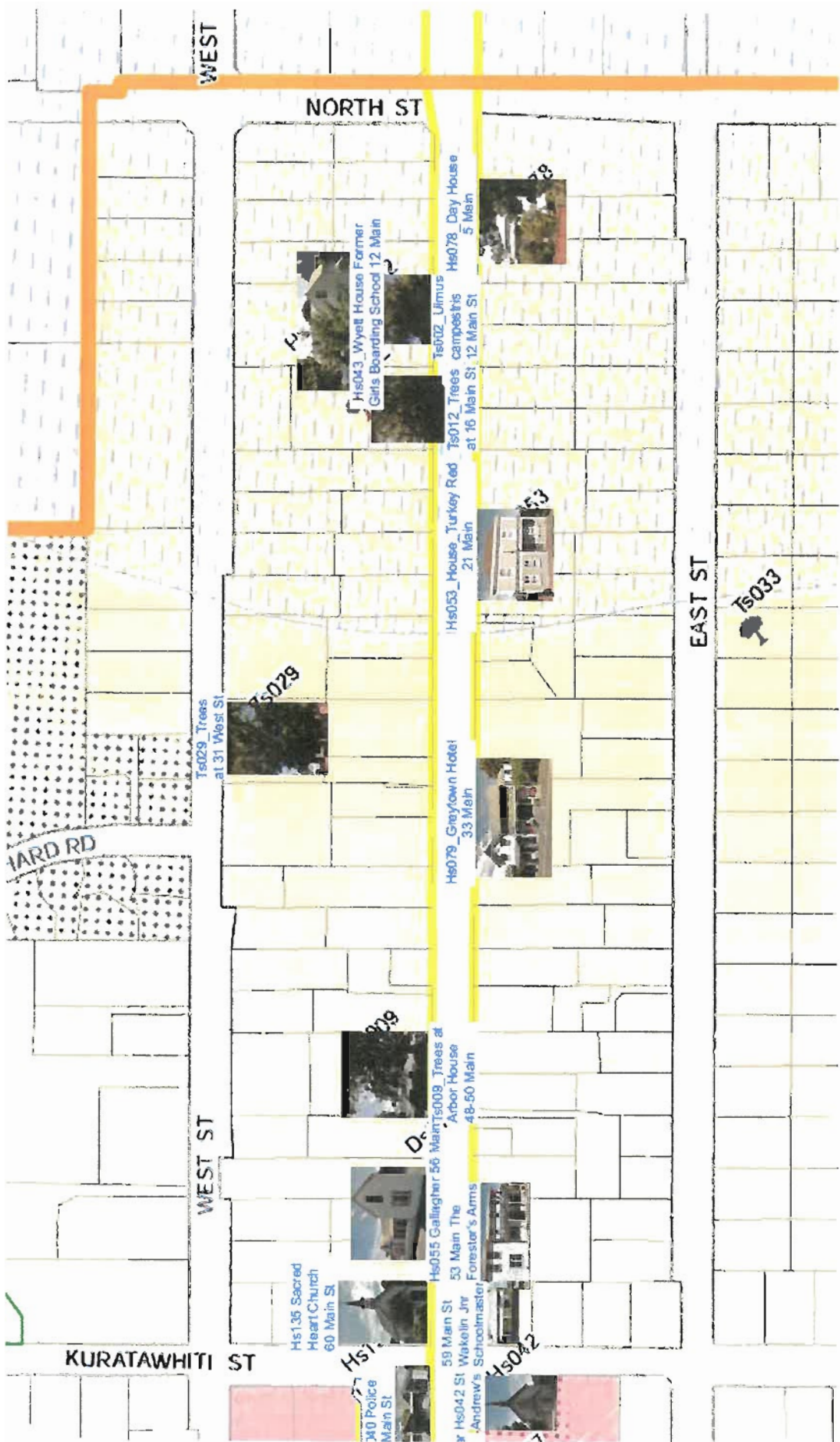
DRAFT
Not Yet for Construction

Existing Heritage Precinct - Wood St to Kuratawhiti St

CONCEPT FOR A LIVELY & SUSTAINABLE TOWN
For public discussion - SWDC Long Term Plan: Greytown
Co-Design Architects Ltd, April 2018 Date Issued: 23/04/18

co-design architects
27 Kings Crescent, Lower Hutt, PO Box 4355
Tel: 484-0718, Silverstream, Upper Hutt, 5142

File No	Issue	Scale	Sheet No	Sheet Total	By
1616WD	103	0			



DRAFT Not Yet for Construction	
Rev/Date	Issue
Scale:	As Shown
App. No	1615WD/104
Sheet No.	0
Checked by: [Signature]	

Kuratawhiti St to North St - Heritage Precinct **1:2000**

**Existing Heritage Precinct -
Kuratawhiti St to North St**

CONCEPT FOR A LIVELY & SUSTAINABLE TOWN
For public discussion - SWDC Long Term Plan Greytown
© Co-Design Architects Ltd, April 2016 Date Issued: 23/04/16

co-design architects
27 Arps Crescent Lower Plains, P.O. Box 4556
Box 45-070, State Street, Upper Plains 5142



Examples of Cluster Developments 1:2000

<p style="text-align: center;">DRAFT Not Yet for Construction</p>		Rev/Date	Issue	By
		Book: As shown @ A3 size	Job No: 1615WD/	Sheet No: 105
<p>co-design 27 Kings Crescent, Lower Hutt, ph(04) 508 4556 Box 48-070, Silverstream, Upper Hutt 5142</p>		<p>CONCEPT FOR A LIVELY & SUSTAINABLE TOWN For public discussion - SWDC Long Term Plan: Greytown © Co-Design Architects Ltd, April 2018 Date Issued: 23/04/18</p>		<p>Examples of Cluster Developments</p>
<p>Check all dimensions on site before starting construction.</p>				



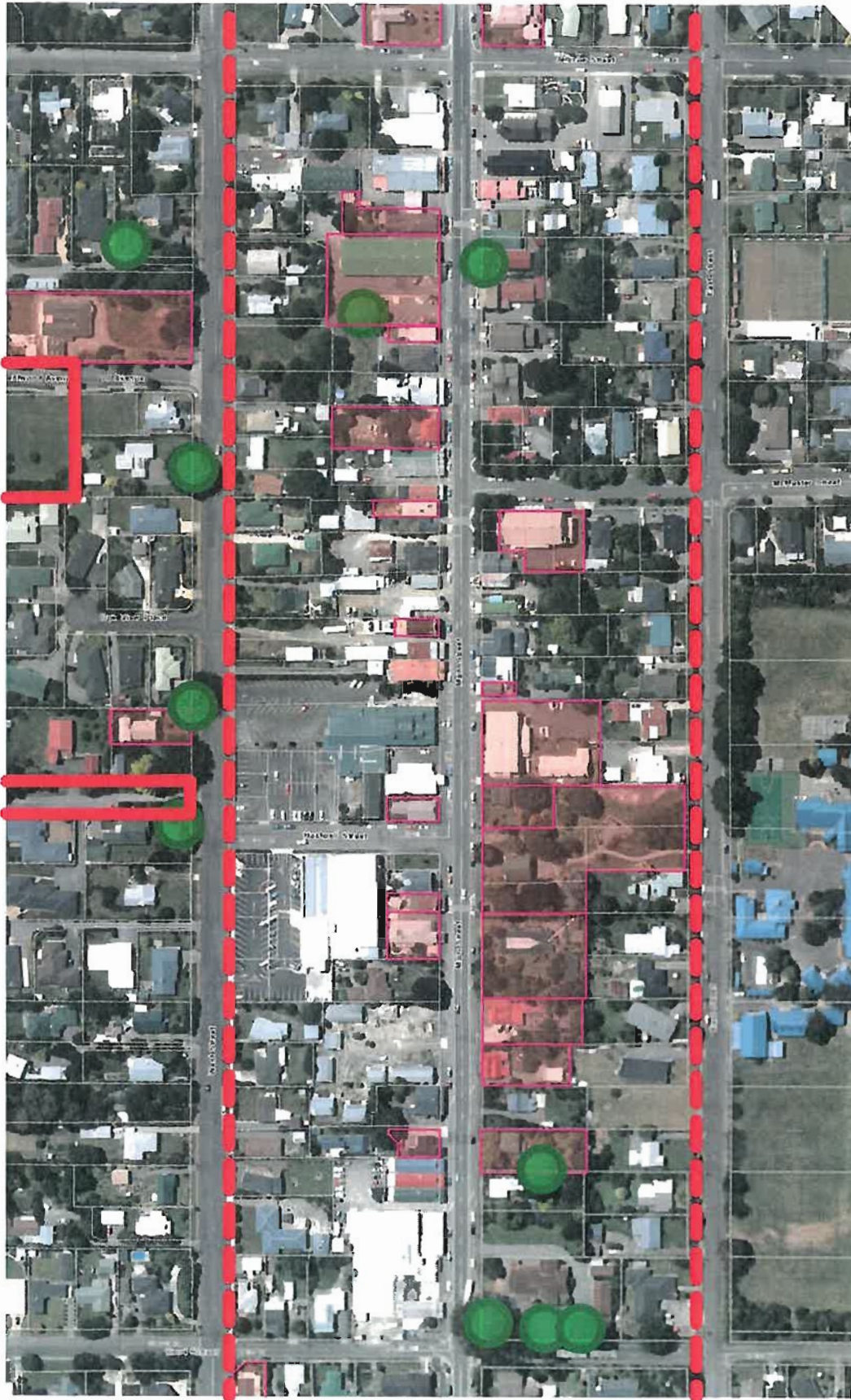
Aerial - Papawai Rd to Wood St **1:2000**

DRAFT Not Yet for Construction	Issue	By	
	Scale: As shown @ A3 size	Job No. 1615WD/	Sheet No. 106
Check all dimensions on site before starting construction			

**Potential Heritage Precinct -
Papawai Rd to Wood St**

CONCEPT FOR A LIVELY & SUSTAINABLE TOWN
For public discussion - SWDC Long Term Plan: Greytown
© Co-Design Architects Ltd. April 2018 Date Issued: 23/04/18

co-design
27 Kings Crescent, Lower Hutt, ph (04) 508 4555
Box 48-070, Silverstream, Upper Hutt 5142



Aerial - Wood St to Kuratawhiti St

1:2000

DRAFT
Not Yet for Construction

Rev/Date	Issue	By
Scale: As shown @ A3 etc	Job No: 1615WD/	Sheet No: 107
Check all @ before starting construction		Rev: 0

**Potential Heritage Precinct -
Wood St to Kuratawhiti St**

CONCEPT FOR A LIVELY & SUSTAINABLE TOWN
For public discussion - SWDC Long Term Plan: Greytown
© Co-Design Architects Ltd, April 2018 Date Issued: 23/04/18

co-design
27 Kirge Crescent, Lower Hutt, ph(04) 938 4555
Box 46-070, Silverstream, Upper Hutt 5142



Aerial - Kuratawhiti St to North St

1:2000

DRAFT

Not Yet for Construction

Rev	Date	Issue	By
0		Issue	

**Potential Heritage Precinct -
Kuratawhiti St to North St**

CONCEPT FOR A LIVELY & SUSTAINABLE TOWN
For public discussion - SWDC Long Term Plan: Greytown
© Co-Design Architects Ltd, April 2018 Date Issued: 23/04/18

co-design
27 Kings Crescent, Lower Hutt, ph(04) 938 4555
Box 48-070, Silverstream, Upper Hutt 5142

SHARE YOUR VIEW ON OUR FUTURE

Feedback must be received by 4pm Monday 23 April 2018.

Please read the consultation document before providing your feedback. You can get your feedback to us in the following ways:

EMAIL ltp@swdc.govt.nz

ONLINE www.swdc.govt.nz

FAX (06) 306 9373

BY POST

South Wairarapa District Council
PO Box 6
Martinborough 5741

IN PERSON Drop this form to your local library or the Council office in Martinborough

Your name and feedback will be public documents. All other personal details will remain private.

NAME ROBERT PETELIN

POS 7

EMAIL _____

PHONE _____

Future growth and development

Option One: Do you support Council's initiative to prepare a spatial plan for the South Wairarapa as outlined on page 4 of the Consultation Document? Cost: \$300,000 over 10 years. Impact on rates: 0.23% per annum increase; or

Option Two: Continue to allow growth in an unstructured way. This option would have no immediate impact on rates, but could result in higher rates in the future due to less efficient use of Council resources than could be achieved with planned development.

Select your preferred option:

Option One Option Two

If you have any views on this project please comment below:

Youth training and development

Option One: Do you support Council's initiative to provide grants to support youth training and development and to provide recreational activities as outlined on page 5 of the Consultation Document? Cost: \$75,000 per annum. Impact on rates: 0.57% per annum increase; or

Option Two: Status quo with no impact on rates.

Select your preferred option:

Option One Option Two

If you have any views on this project please comment below:

THIS IS CENTRAL GOVERNMENT AFFAIR
MINISTRY OF YOUTH AND MINISTRY OF SPORT

Promoting and enhancing our district

Option One: Do you support Council's initiative to promote and enhance our district as outlined on page 5 of the Consultation Document? Cost: 300,000 over 10 years. Impact on rates: 0.23% per annum increase; or

Option Two: Status quo with no impact on rates; or

Option Three: Proceed with annual expenditure at a level other than that proposed. Amount: \$ _____

Select your preferred option:

Option One Option Two Option Three

If you have any views on this project please comment below:

AGAIN CENTRAL GOV. PROMOTION OF
PROVINCES / ANY INCREASE IN USAGE OF FACILITIES
SHOULD BE ON THE DEVELOPERS EXPENSE

Infrastructure for visitors

Option One: Do you support Council's initiative to provide more infrastructure for visitors (e.g. more public toilets, drinking fountains, motor caravan dumping stations, better rubbish and recycling facilities) as outlined on page 5 of the Consultation Document? Cost: \$50,000 per annum for 5 years. Impact on rates: 0.006% per annum increase; or

Option Two: Status quo with no impact on rates.

Select your preferred option:

Option One Option Two

If you have any views on this project please comment below:

AGAIN WHY DO WE HAVE MINISTRY OF
TOURISM THEY HAVE MODEST BUDGET
TOURISTS BRING IN BILLIONS OF DOLLARS WHY
SHOULD ORDINARY RATEPAYERS PAY FOR IT

RATEPAYER Urban Rural Commercial Non ratepayer

AGE: 15-24 25-34 35-44 45-54 55-64 65+

Yes I/we would like to speak to this submission:

SPEAKING PREFERENCE May 14th May 15th

Organisation: _____

(Only if authorised to submit on behalf of organisation, one submission per organisation)

Rates Affordability

Do you agree with the proposed overall average rates increase for the next 10 years, enabling the proposed expenditure outlined in this document?

Agree Disagree

If not what general rates increase do you support?

3% (inflation only) 5% Other _____

If you ticked 'disagree' which activity areas do you think we should spend less on?

YOU SHOULD ONLY THINK TO SPEND LESS IF YOU GET
LESS IF YOU GET SAME AS LAST YEAR THE SERVICE
OR EXPENTION SHOUL BE THE SAME

I DISAGRE WITH YOUR QUESTION I CONSIDER
IT AS POLITICAL BLACKMAIL

Option One: Do you support central coordination of sport across the district as outlined on page 5 of the Consultation Document? Estimated cost of \$50,000 per annum (a further 0.38% per annum rates increase); or

Option Two: Status quo with no impact on rates.

Select your preferred option:

Option One Option Two

If you have any views on this project please comment below:

ANY GRANTS SHOULD COME FROM THE
MINISTRY OF SPORT (LIKE IN OTHER COUNTRIES)

Reducing waste going to landfills

Council is considering the following changes, indicate which of the following you would support (costs not included in LTP budgets).

A Do you support provision of kerbside food waste collections? This service is estimated to cost \$73,000 per annum (a further 0.55% per annum rates increase). See page 6 of the Consultation Document for more detail.
 Yes No

B Do you support provision of 240 litre wheelie bins for recycling? This service is estimated to cost \$32,000 per annum (a further 0.24% per annum rates increase). See page 6 of the Consultation Document for more detail.
 Yes No

C Do you support provision of an e-waste service at transfer stations or an advertised collection service scheduled throughout the year? This service is estimated to cost \$7,000 per annum (a further 0.05% per annum rates increase). See page 6 of the Consultation Document for more detail.
 Yes No

D Do you support provision of a recycling/recovery centre at a transfer station? This service is estimated to cost \$14,000 per annum (a further 0.11% per annum rates increase). See page 6 of the Consultation Document for more detail.
 Yes No

These ideas are not mutually exclusive, you can support more than one. These ideas are not included in the current rates increase of 5.99% in year one.

If you have any views on these ideas please comment below:

COUNCIL ALREADY GETS PAID BY THE
RATEPAYERS FOR REMOVAL OF RUBISH HOW YOU
HANDLE THE SITUATION IS UP TO YOU

Thanks for sharing your views and helping to shape South Wairarapa

Water conservation

Council is considering ways to conserve water.

Option One: Do you support undertaking a feasibility study to investigate ways to reduce water usage or increase water storage? The study is estimated to cost \$50,000 (a further 0.38% per annum rates increase for the 2018/19 year only). See page 6 of the Consultation Document for more detail; or

Option Two: Do you support continuation of Council's current approach to water conservation i.e. encouraging users to reduce their water usage as outlined on page 6 of the Consultation Document?; or

Option Three: What other options would you like Council to investigate to conserve water in our district?

Select your preferred option:

Option One Option Two Option Three

Option Three:
WHY SHOULD YOU ENGAGE CONSULTANTS
WE EMPLOY WORKS MANAGERS WITH ENGINEERING
DEGREES WHY SHOULD THEY BE REPLACED
BY CONSULTANTS?

If you have any views on these ideas please comment below:

Fees and charges

Do you have any comments about the proposed changes to fees and charges as outlined on page 14 of the Consultation Document?

HOW COME BUILDING AND HYGIENE FEES
ARE INFLATION FRIENDLY BUT NOT
GENERAL RATES

Grants

If you are applying for a grant please complete the grant application form which is available on our website or at the addresses listed at the top of this form.

Other feedback

Council would like to hear any other feedback you have in relation to the content of the Consultation Document or any of the LTP supporting information or anything you think needs to be included that is not.

Please provide any other comments below:

I WAS NOT IMPRESSED ON THE ANSWER
OF THE QUESTION TO IMPROVE THE TIMING
OF CONSENT FROM 20 WORKING DAYS
TO SOMETHING MORE REASONABLE IN LINE
WITH OTHER COUNCILS YOUR REPLY WAS
FLAT NO

I WOULD LIKE A COPY OF ALL SUBMISSIONS
WHEN READ IF THERE ANY COST
I'M WILLING TO MEET THE COST
(Continue on another sheet if required)

REGARDS Rheta

SHARE YOUR VIEW ON OUR FUTURE

Feedback must be received by 4pm Monday 23 April 2018.

Please read the consultation document before providing your feedback. You can get your feedback to us in the following ways:

EMAIL ltf@swdc.govt.nz

ONLINE www.swdc.govt.nz

FAX (06) 306 9373

BY POST

South Wairarapa District Council
PO Box 6
Martinborough 5741

IN PERSON Drop this form to your local library or the Council office in Martinborough

Your name and feedback will be public documents. All other personal details will remain private.

NAME PETE ROBERTS

POSTAL ADDRESS

EMAIL

PHONE

Future growth and development

Option One: Do you support Council's initiative to prepare a spatial plan for the South Wairarapa as outlined on page 4 of the Consultation Document? Cost: \$300,000 over 10 years. Impact on rates: 0.23% per annum increase; or

Option Two: Continue to allow growth in an unstructured way. This option would have no immediate impact on rates, but could result in higher rates in the future due to less efficient use of Council resources than could be achieved with planned development.

Select your preferred option:

Option One Option Two

If you have any views on this project please comment below:

But, the way SWDC developed land at the centre of Featherston ^{meas,} have reservations over their ability to produce a plan.

Youth training and development

Option One: Do you support Council's initiative to provide grants to support youth training and development and to provide recreational activities as outlined on page 5 of the Consultation Document? Cost: \$75,000 per annum. Impact on rates: 0.57% per annum increase; or

Option Two: Status quo with no impact on rates.

Select your preferred option:

Option One Option Two

If you have any views on this project please comment below:

Youth development is mainly the province of parents and schools, you have not shown how the council would augment this.

Promoting and enhancing our district

Option One: Do you support Council's initiative to promote and enhance our district as outlined on page 5 of the Consultation Document? Cost: 300,000 over 10 years. Impact on rates: 0.23% per annum increase; or

Option Two: Status quo with no impact on rates; or

Option Three: Proceed with annual expenditure at a level other than that proposed. Amount: \$ _____

Select your preferred option:

Option One Option Two Option Three

If you have any views on this project please comment below:

Previous plans have included encouraging businesses to help grow the economy but council's actions do not bear this out.

Infrastructure for visitors

Option One: Do you support Council's initiative to provide more infrastructure for visitors (e.g. more public toilets, drinking fountains, motor caravan dumping stations, better rubbish and recycling facilities) as outlined on page 5 of the Consultation Document? Cost: \$50,000 per annum for 5 years. Impact on rates: 0.006% per annum increase; or

Option Two: Status quo with no impact on rates.

Select your preferred option:

Option One Option Two

If you have any views on this project please comment below:

RATEPAYER Urban Rural Commercial Non ratepayer

AGE: 15-24 25-34 35-44 45-54 55-64 65+

Yes I/we would like to speak to this submission:

SPEAKING PREFERENCE May 14th May 15th

Organisation: _____

(Only if authorised to submit on behalf of organisation, one submission per organisation)

Rates Affordability

Do you agree with the proposed overall average rates increase for the next 10 years, enabling the proposed expenditure outlined in this document?

Agree Disagree

If not what general rates increase do you support?

3% (inflation only) 5% Other _____

If you ticked 'disagree' which activity areas do you think we should spend less on?

Sports coordination

Option One: Do you support central coordination of sport across the district as outlined on page 5 of the Consultation Document? Estimated cost of \$50,000 per annum (a further 0.38% per annum rates increase); or

Option Two: Status quo with no impact on rates.

Select your preferred option:

Option One Option Two

If you have any views on this project please comment below:

Reducing waste going to landfills

Council is considering the following changes, indicate which of the following you would support (costs not included in LTP budgets).

A Do you support provision of kerbside food waste collections? This service is estimated to cost \$73,000 per annum (a further 0.55% per annum rates increase). See page 6 of the Consultation Document for more detail.

Yes No

B Do you support provision of 240 litre wheelie bins for recycling? This service is estimated to cost \$32,000 per annum (a further 0.24% per annum rates increase). See page 6 of the Consultation Document for more detail.

Yes No

C Do you support provision of an e-waste service at transfer stations or an advertised collection service scheduled throughout the year? This service is estimated to cost \$7,000 per annum (a further 0.05% per annum rates increase). See page 6 of the Consultation Document for more detail.

Yes No

D Do you support provision of a recycling/recovery centre at a transfer station? This service is estimated to cost \$14,000 per annum (a further 0.11% per annum rates increase). See page 6 of the Consultation Document for more detail.

Yes No

These ideas are not mutually exclusive, you can support more than one. These ideas are not included in the current rates increase of 5.99% in year one.

If you have any views on these ideas please comment below:

A. Council could give residents guidelines on composting food waste
 B. Wouldn't this make the separation of types of recycling a bigger job?
 C. This type of waste is likely to increase so it makes sense to provide a service for it.
 D. Wellington & Kapiti already do this and it appears to be successful.



Water conservation

Council is considering ways to conserve water.

Option One: Do you support undertaking a feasibility study to investigate ways to reduce water usage or increase water storage? The study is estimated to cost \$50,000 (a further 0.38% per annum rates increase for the 2018/19 year only). See page 6 of the Consultation Document for more detail; or

Option Two: Do you support continuation of Council's current approach to water conservation i.e. encouraging users to reduce their water usage as outlined on page 6 of the Consultation Document?; or

Option Three: What other options would you like Council to investigate to conserve water in our district?

Select your preferred option:

Option One Option Two Option Three

Option Three:

As council states that the long term plan is rates generational now is the time to plan extra water storage. Kapiti have bought land for a future reservoir, this is the sort of long term strategy that is needed.
 If you have any views on these ideas please comment below:

Fees and charges

Do you have any comments about the proposed changes to fees and charges as outlined on page 14 of the Consultation Document?

For pensioners housing it is interesting that council has found that other providers charge a lot more. This conflicts with the CEO's stance at the 2017 long term plan presentation when he said that pensioners would be better off with a private provider.

Grants

If you are applying for a grant please complete the grant application form which is available on our website or at the addresses listed at the top of this form.

Other feedback

Council would like to hear any other feedback you have in relation to the content of the Consultation Document or any of the LTP supporting information or anything you think needs to be included that is not.

Please provide any other comments below:

Does the spatial planning mean that the commercial zone that Featherston Town Square is on will be considered for re-development so that the whole site could become a viable business proposition?

(Continue on another sheet if required)

SHARE YOUR VIEW ON OUR FUTURE

Feedback must be received by 4pm Monday 23 April 2018.

Please read the consultation document before providing your feedback. You can get your feedback to us in the following ways:

EMAIL ltp@swdc.govt.nz

ONLINE www.swdc.govt.nz

FAX (06) 306 9373

BY POST

South Wairarapa District Council
PO Box 6
Martinborough 5741

IN PERSON Drop this form to your local library or the Council office in Martinborough

Your name and feedback will be public documents. All other personal details will remain private.

NAME LESLEY CHRISTIAN

POSTAL ADE RI 1

EMAIL _____

PHONE _____

RATEPAYER Urban Rural Commercial Non ratepayer

AGE: 15-24 25-34 35-44 45-54 55-64 65+

Yes I/we would like to speak to this submission:

SPEAKING PREFERENCE May 14th May 15th

Organisation: _____

(Only if authorised to submit on behalf of organisation, one submission per organisation)

Rates Affordability

Do you agree with the proposed overall average rates increase for the next 10 years, enabling the proposed expenditure outlined in this document?

Agree Disagree

If not what general rates increase do you support?

3% (inflation only) 5 % Other _____

If you ticked 'disagree' which activity areas do you think we should spend less on?

Future growth and development

Option One: Do you support Council's initiative to prepare a spatial plan for the South Wairarapa as outlined on page 4 of the Consultation Document? Cost: \$300,000 over 10 years. Impact on rates: 0.23% per annum increase; or

Option Two: Continue to allow growth in an unstructured way. This option would have no immediate impact on rates, but could result in higher rates in the future due to less efficient use of Council resources than could be achieved with planned development.

Select your preferred option:

Option One Option Two

If you have any views on this project please comment below:

Youth training and development

Option One: Do you support Council's initiative to provide grants to support youth training and development and to provide recreational activities as outlined on page 5 of the Consultation Document? Cost: \$75,000 per annum. Impact on rates: 0.57% per annum increase; or

Option Two: Status quo with no impact on rates.

Select your preferred option:

Option One Option Two

If you have any views on this project please comment below:

IT IS NO PART OF COUNCIL'S DUTIES TO BE INVOLVED DIRECTLY WITH THE POPULATION

Promoting and enhancing our district

Option One: Do you support Council's initiative to promote and enhance our district as outlined on page 5 of the Consultation Document? Cost: 300,000 over 10 years. Impact on rates: 0.23% per annum increase; or

Option Two: Status quo with no impact on rates; or

Option Three: Proceed with annual expenditure at a level other than that proposed. Amount: \$ _____

Select your preferred option:

Option One Option Two Option Three

If you have any views on this project please comment below:

LOCAL GOVT HAS NEVER BEEN SUCCESSFUL AT THIS - LEAVE IT TO COMMERCE, THEY DO IT BETTER.

Infrastructure for visitors

Option One: Do you support Council's initiative to provide more infrastructure for visitors (e.g. more public toilets, drinking fountains, motor caravan dumping stations, better rubbish and recycling facilities) as outlined on page 5 of the Consultation Document? Cost: \$50,000 per annum for 5 years. Impact on rates: 0.006% per annum increase; or

Option Two: Status quo with no impact on rates.

Select your preferred option:

Option One Option Two

If you have any views on this project please comment below:

INFRASTRUCTURE IS THE COUNCIL'S RESPONSIBILITY, LET BUSINESS DO THE REST

Sports coordination

Option One: Do you support central coordination of sport across the district as outlined on page 5 of the Consultation Document? Estimated cost of \$50,000 per annum (a further 0.38% per annum rates increase); or

Option Two: Status quo with no impact on rates.

Select your preferred option:

Option One Option Two

If you have any views on this project please comment below:

"CENTRAL" COORDINATION OF SPORT HAS ALREADY DONE MORE HARM THAN GOOD.

Reducing waste going to landfills

Council is considering the following changes, indicate which of the following you would support (costs not included in LTP budgets).

A Do you support provision of kerbside food waste collections? This service is estimated to cost \$73,000 per annum (a further 0.55% per annum rates increase). See page 6 of the Consultation Document for more detail.

Yes No

B Do you support provision of 240 litre wheelie bins for recycling? This service is estimated to cost \$32,000 per annum (a further 0.24% per annum rates increase). See page 6 of the Consultation Document for more detail.

Yes No

C Do you support provision of an e-waste service at transfer stations or an advertised collection service scheduled throughout the year? This service is estimated to cost \$7,000 per annum (a further 0.05% per annum rates increase). See page 6 of the Consultation Document for more detail.

Yes No

D Do you support provision of a recycling/recovery centre at a transfer station? This service is estimated to cost \$14,000 per annum (a further 0.11% per annum rates increase). See page 6 of the Consultation Document for more detail.

Yes No

These ideas are not mutually exclusive, you can support more than one. These ideas are not included in the current rates increase of 5.99% in year one.

If you have any views on these ideas please comment below:

IS PART OF COUNCIL'S CORE BUSINESS

Thanks for sharing your views and helping to shape South Wairarapa

Water conservation

Council is considering ways to conserve water.

Option One: Do you support undertaking a feasibility study to investigate ways to reduce water usage or increase water storage? The study is estimated to cost \$50,000 (a further 0.38% per annum rates increase for the 2018/19 year only). See page 6 of the Consultation Document for more detail; or

Option Two: Do you support continuation of Council's current approach to water conservation i.e. encouraging users to reduce their water usage as outlined on page 6 of the Consultation Document?; or

Option Three: What other options would you like Council to investigate to conserve water in our district?

Select your preferred option:

Option One Option Two Option Three

Option Three: ENCOURAGE HOME OWNERS TO INSTALL RAIN WATER TANKS FOR GARDEN/OUTDOOR USE

If you have any views on these ideas please comment below:

Fees and charges

Do you have any comments about the proposed changes to fees and charges as outlined on page 14 of the Consultation Document?

Grants

If you are applying for a grant please complete the grant application form which is available on our website or at the addresses listed at the top of this form.

Other feedback

Council would like to hear any other feedback you have in relation to the content of the Consultation Document or any of the LTP supporting information or anything you think needs to be included that is not.

Please provide any other comments below:

FEATHERSTON LIBRARY IS TOO SMALL. JOIN UP WITH THE OLD COURT HOUSE BUILDING TO DOUBLE THE SPACE.

(Continue on another sheet if required)

141

SHARE YOUR VIEW ON OUR FUTURE

Feedback must be received by 4pm Monday 23 April 2018.

Please read the consultation document before providing your feedback. You can get your feedback to us in the following ways:

EMAIL ltp@swdc.govt.nz

ONLINE www.swdc.govt.nz

FAX (06) 306 9373

BY POST

South Wairarapa District Council
PO Box 6
Martinborough 5741

IN PERSON Drop this form to your local library or the Council office in Martinborough

Your name and feedback will be public documents. All other personal details will remain private.

NAME ANASTACIA KIRK

POSTAL ADDRESS

EMAIL

PHONE

RATEPAYER Urban Rural Commercial Non ratepayer

AGE: 15-24 25-34 35-44 45-54 55-64 65+

Yes I/we would like to speak to this submission:

SPEAKING PREFERENCE May 14th May 15th

Organisation: _____

(Only if authorised to submit on behalf of organisation, one submission per organisation)

Rates Affordability

Do you agree with the proposed overall average rates increase for the next 10 years, enabling the proposed expenditure outlined in this document?

Agree Disagree

If not what general rates increase do you support?

3% (inflation only) 5% Other _____

If you ticked 'disagree' which activity areas do you think we should spend less on?

INFRASTRUCTURE FOR VISITORS

SPORTS COORDINATION

Future growth and development

Option One: Do you support Council's initiative to prepare a spatial plan for the South Wairarapa as outlined on page 4 of the Consultation Document? Cost: \$300,000 over 10 years. Impact on rates: 0.23% per annum increase; or

Option Two: Continue to allow growth in an unstructured way. This option would have no immediate impact on rates, but could result in higher rates in the future due to less efficient use of Council resources than could be achieved with planned development.

Select your preferred option:

Option One Option Two

If you have any views on this project please comment below:

UNCLEAR IF THIS IS A LEGAL REQUIREMENT UNDER

NPS - A NICE TO DO, SHOULD ALREADY BE PART OF CORE MAPPING PROGRAMME. COST SEEMS VERY HIGH FOR WHAT ESSENTIALLY IS GIS MAPPING.

Option One: Do you support Council's initiative to provide grants to support youth training and development and to provide recreational activities as outlined on page 5 of the Consultation Document? Cost: \$75,000 per annum. Impact on rates: 0.57% per annum increase; or

Option Two: Status quo with no impact on rates.

Select your preferred option:

Option One Option Two

If you have any views on this project please comment below:

NOT ROLE OF COUNCIL

Promoting and enhancing our district

Option One: Do you support Council's initiative to promote and enhance our district as outlined on page 5 of the Consultation Document? Cost: 300,000 over 10 years. Impact on rates: 0.23% per annum increase; or

Option Two: Status quo with no impact on rates; or

Option Three: Proceed with annual expenditure at a level other than that proposed. Amount: \$ _____

Select your preferred option:

Option One Option Two Option Three

If you have any views on this project please comment below:

Infrastructure for visitors

Option One: Do you support Council's initiative to provide more infrastructure for visitors (e.g. more public toilets, drinking fountains, motor caravan dumping stations, better rubbish and recycling facilities) as outlined on page 5 of the Consultation Document? Cost: \$50,000 per annum for 5 years. Impact on rates: 0.006% per annum increase; or

Option Two: Status quo with no impact on rates.

Select your preferred option:

Option One Option Two

If you have any views on this project please comment below:

FOCUS ON MAINTAINING EXISTING FACILITIES TO A HIGH STANDARD. BETTER RUBBISH & RECYCLING FOR VISITORS - WHAT ABOUT RESIDENTS? TAKE A LOOK AT THE ROAD IN & OUT OF THE FEATHERSTON RECYCLING CENTRE - APPALLING!

Option One: Do you support central coordination of sport across the district as outlined on page 5 of the Consultation Document? Estimated cost of \$50,000 per annum (a further 0.38% per annum rates increase); or

Option Two: Status quo with no impact on rates.

Select your preferred option:

Option One Option Two

If you have any views on this project please comment below:

NOT COUNCIL CORE WORK.

Reducing waste going to landfills

Council is considering the following changes, indicate which of the following you would support (costs not included in LTP budgets).

A Do you support provision of kerbside food waste collections? This service is estimated to cost \$73,000 per annum (a further 0.55% per annum rates increase). See page 6 of the Consultation Document for more detail.

Yes No

B Do you support provision of 240 litre wheelie bins for recycling? This service is estimated to cost \$32,000 per annum (a further 0.24% per annum rates increase). See page 6 of the Consultation Document for more detail.

Yes No

C Do you support provision of an e-waste service at transfer stations or an advertised collection service scheduled throughout the year? This service is estimated to cost \$7,000 per annum (a further 0.05% per annum rates increase). See page 6 of the Consultation Document for more detail.

Yes No

D Do you support provision of a recycling/recovery centre at a transfer station? This service is estimated to cost \$14,000 per annum (a further 0.11% per annum rates increase). See page 6 of the Consultation Document for more detail.

Yes No

These ideas are not mutually exclusive, you can support more than one. These ideas are not included in the current rates increase of 5.99% in year one.

If you have any views on these ideas please comment below:

NEED TO ADDRESS BATTERY RECYCLING (SAFE DISPOSAL BEFORE SOME OF THE ABOVE.



Council is considering ways to conserve water.

Option One: Do you support undertaking a feasibility study to investigate ways to reduce water usage or increase water storage? The study is estimated to cost \$50,000 (a further 0.38% per annum rates increase for the 2018/19 year only). See page 6 of the Consultation Document for more detail; or

Option Two: Do you support continuation of Council's current approach to water conservation i.e. encouraging users to reduce their water usage as outlined on page 6 of the Consultation Document?; or

Option Three: What other options would you like Council to investigate to conserve water in our district?

Select your preferred option:

Option One Option Two Option Three

Option Three:

If you have any views on these ideas please comment below:

PROVIDE SUBSIDISED HOME WATER COLLECTION TANKS AS ANOTHER OPTION

Fees and charges

Do you have any comments about the proposed changes to fees and charges as outlined on page 14 of the Consultation Document?

NOT ENOUGH INFORMATION MADE AVAILABLE REGARDING THIS. NOT ONLINE UNDER SUPPORTING DOCUMENTS NOR DID A SEARCH ON THE WEBSITE PROVIDE THIS INFORMATION. VERY POOR CONSULTATION - UNABLE TO COMMENT AS A RESULT.

If you are applying for a grant please complete the grant application form which is available on our website or at the addresses listed at the top of this form.

Other feedback

Council would like to hear any other feedback you have in relation to the content of the Consultation Document or any of the LTP supporting information or anything you think needs to be included that is not.

Please provide any other comments below:

NEWS THAT THE PROPOSED DEVELOPMENT BESIDE THE TOWN SQUARE (NOT UTILISED / DEAD SPACE) WILL NOT GO AHEAD. BUSINESS SHOULD BE ENCOURAGED HERE IN FEATHERSTON GIVEN ITS SLOW PROGRESS COMPARED TO OTHER TOWNS IN THE SOUTH WAIRARAPA. VERY DISAPPOINTING THAT COUNCIL HAVE NOT FOUND A WAY TO MAKE IT WORK.

(Continue on another sheet if required)

SHARE YOUR VIEW ON OUR FUTURE

Feedback must be received by 4pm Monday 23 April 2018.

Please read the consultation document before providing your feedback. You can get your feedback to us in the following ways:

EMAIL ltf@swdc.govt.nz

ONLINE www.swdc.govt.nz

FAX (06) 306 9373

BY POST

South Wairarapa District Council
PO Box 6
Martinborough 5741

IN PERSON Drop this form to your local library or the Council office in Martinborough

Your name and feedback will be public documents. All other personal details will remain private.

NAME John Stephen

POSTAL ADDRESS

EMAIL

PHONE

RATEPAYER Urban Rural Commercial Non ratepayer

AGE: 15-24 25-34 35-44 45-54 55-64 65+

Yes I/we would like to speak to this submission:

SPEAKING PREFERENCE May 14th May 15th

Organisation:

(Only if authorised to submit on behalf of organisation, one submission per organisation)

Rates Affordability

Do you agree with the proposed overall average rates increase for the next 10 years, enabling the proposed expenditure outlined in this document?

Agree Disagree

If not what general rates increase do you support?

3% (inflation only) 5 % Other _____

If you ticked 'disagree' which activity areas do you think we should spend less on?

Future growth and development

Option One: Do you support Council's initiative to prepare a spatial plan for the South Wairarapa as outlined on page 4 of the Consultation Document? Cost: \$300,000 over 10 years. Impact on rates: 0.23% per annum increase; or

Option Two: Continue to allow growth in an unstructured way. This option would have no immediate impact on rates, but could result in higher rates in the future due to less efficient use of Council resources than could be achieved with planned development.

Select your preferred option:

Option One Option Two

If you have any views on this project please comment below:

Youth training and development

Option One: Do you support Council's initiative to provide grants to support youth training and development and to provide recreational activities as outlined on page 5 of the Consultation Document? Cost: \$75,000 per annum. Impact on rates: 0.57% per annum increase; or

Option Two: Status quo with no impact on rates.

Select your preferred option:

Option One Option Two

If you have any views on this project please comment below:

Promoting and enhancing our district

Option One: Do you support Council's initiative to promote and enhance our district as outlined on page 5 of the Consultation Document? Cost: 300,000 over 10 years. Impact on rates: 0.23% per annum increase; or

Option Two: Status quo with no impact on rates; or

Option Three: Proceed with annual expenditure at a level other than that proposed. Amount: \$ _____

Select your preferred option:

Option One Option Two Option Three

If you have any views on this project please comment below:

Infrastructure for visitors

Option One: Do you support Council's initiative to provide more infrastructure for visitors (e.g. more public toilets, drinking fountains, motor caravan dumping stations, better rubbish and recycling facilities) as outlined on page 5 of the Consultation Document? Cost: \$50,000 per annum for 5 years. Impact on rates: 0.006% per annum increase; or

Option Two: Status quo with no impact on rates.

Select your preferred option:

Option One Option Two

If you have any views on this project please comment below:

Option One: Do you support central coordination of sport across the district as outlined on page 5 of the Consultation Document? Estimated cost of \$50,000 per annum (a further 0.38% per annum rates increase); or

Option Two: Status quo with no impact on rates.

Select your preferred option:

Option One Option Two

If you have any views on this project please comment below:

Reducing waste going to landfills

Council is considering the following changes, indicate which of the following you would support (costs not included in LTP budgets).

A Do you support provision of kerbside food waste collections? This service is estimated to cost \$73,000 per annum (a further 0.55% per annum rates increase). See page 6 of the Consultation Document for more detail.

Yes No

B Do you support provision of 240 litre wheelie bins for recycling? This service is estimated to cost \$32,000 per annum (a further 0.24% per annum rates increase). See page 6 of the Consultation Document for more detail.

Yes No

C Do you support provision of an e-waste service at transfer stations or an advertised collection service scheduled throughout the year? This service is estimated to cost \$7,000 per annum (a further 0.05% per annum rates increase). See page 6 of the Consultation Document for more detail.

Yes No

D Do you support provision of a recycling/recovery centre at a transfer station? This service is estimated to cost \$14,000 per annum (a further 0.11% per annum rates increase). See page 6 of the Consultation Document for more detail.

Yes No

These ideas are not mutually exclusive, you can support more than one. These ideas are not included in the current rates increase of 5.99% in year one.

If you have any views on these ideas please comment below:

Thanks for sharing your views and helping to shape South Wairarapa

Council is considering ways to conserve water.

Option One: Do you support undertaking a feasibility study to investigate ways to reduce water usage or increase water storage? The study is estimated to cost \$50,000 (a further 0.38% per annum rates increase for the 2018/19 year only). See page 6 of the Consultation Document for more detail; or

Option Two: Do you support continuation of Council's current approach to water conservation i.e. encouraging users to reduce their water usage as outlined on page 6 of the Consultation Document?; or

Option Three: What other options would you like Council to investigate to conserve water in our district?

Select your preferred option:

Option One Option Two Option Three

Option Three:

If you have any views on these ideas please comment below:

Fees and charges

Do you have any comments about the proposed changes to fees and charges as outlined on page 14 of the Consultation Document?

Grants

If you are applying for a grant please complete the grant application form which is available on our website or at the addresses listed at the top of this form.

Other feedback

Council would like to hear any other feedback you have in relation to the content of the Consultation Document or any of the LTP supporting information or anything you think needs to be included that is not.

Please provide any other comments below:

I think undertaking an LTP for SWDC is a waste of time and money. I voted to merge the 3 councils of the Wairarapa, and I wish this had happened. Shortsighted decision.

(Continue on another sheet if required)

SHARE YOUR VIEW ON OUR FUTURE

Feedback must be received by 4pm Monday 23 April 2018.

Please read the consultation document before providing your feedback. You can get your feedback to us in the following ways:

EMAIL ltf@swdc.govt.nz

ONLINE www.swdc.govt.nz

FAX (06) 306 9373

BY POST

South Wairarapa District Council
PO Box 6
Martinborough 5741

IN PERSON Drop this form to your local library or the Council office in Martinborough

Your name and feedback will be public documents. All other personal details will remain private.

NAME Renze Bijke

POSTAL ADDRESS 8

EMAIL _____

PHONE _____

RATEPAYER Urban Rural Commercial Non ratepayer

AGE: 15-24 25-34 35-44 45-54 55-64 65+

Yes I/we would like to speak to this submission:

SPEAKING PREFERENCE May 14th May 15th

Organisation: _____

(Only if authorised to submit on behalf of organisation, one submission per organisation)

Rates Affordability

Do you agree with the proposed overall average rates increase for the next 10 years, enabling the proposed expenditure outlined in this document?

Agree Disagree

If not what general rates increase do you support?

3% (inflation only) 5 % Other _____

If you ticked 'disagree' which activity areas do you think we should spend less on?

Future growth and development

Option One: Do you support Council's initiative to prepare a spatial plan for the South Wairarapa as outlined on page 4 of the Consultation Document? Cost: \$300,000 over 10 years. Impact on rates: 0.23% per annum increase; or

Option Two: Continue to allow growth in an unstructured way. This option would have no immediate impact on rates, but could result in higher rates in the future due to less efficient use of Council resources than could be achieved with planned development.

Select your preferred option:

Option One Option Two

If you have any views on this project please comment below:

Youth training and development

Option One: Do you support Council's initiative to provide grants to support youth training and development and to provide recreational activities as outlined on page 5 of the Consultation Document? Cost: \$75,000 per annum. Impact on rates: 0.57% per annum increase; or

Option Two: Status quo with no impact on rates.

Select your preferred option:

Option One Option Two

If you have any views on this project please comment below:

Promoting and enhancing our district

Option One: Do you support Council's initiative to promote and enhance our district as outlined on page 5 of the Consultation Document? Cost: 300,000 over 10 years. Impact on rates: 0.23% per annum increase; or

Option Two: Status quo with no impact on rates; or

Option Three: Proceed with annual expenditure at a level other than that proposed. Amount: \$ _____

Select your preferred option:

Option One Option Two Option Three

If you have any views on this project please comment below:

Infrastructure for visitors

Option One: Do you support Council's initiative to provide more infrastructure for visitors (e.g. more public toilets, drinking fountains, motor caravan dumping stations, better rubbish and recycling facilities) as outlined on page 5 of the Consultation Document? Cost: \$50,000 per annum for 5 years. Impact on rates: 0.006% per annum increase; or

Option Two: Status quo with no impact on rates.

Select your preferred option:

Option One Option Two

If you have any views on this project please comment below:

S+H Sports coordination

Option One: Do you support central coordination of sport across the district as outlined on page 5 of the Consultation Document? Estimated cost of \$50,000 per annum (a further 0.38% per annum rates increase); or

Option Two: Status quo with no impact on rates.

Select your preferred option:

Option One Option Two

If you have any views on this project please comment below:

Reducing waste going to landfills

Council is considering the following changes, indicate which of the following you would support (costs not included in LTP budgets).

A Do you support provision of kerbside food waste collections? This service is estimated to cost \$73,000 per annum (a further 0.55% per annum rates increase). See page 6 of the Consultation Document for more detail.

Yes No

B Do you support provision of 240 litre wheelie bins for recycling? This service is estimated to cost \$32,000 per annum (a further 0.24% per annum rates increase). See page 6 of the Consultation Document for more detail.

Yes No

C Do you support provision of an e-waste service at transfer stations or an advertised collection service scheduled throughout the year? This service is estimated to cost \$7,000 per annum (a further 0.05% per annum rates increase). See page 6 of the Consultation Document for more detail.

Yes No

D Do you support provision of a recycling/recovery centre at a transfer station? This service is estimated to cost \$14,000 per annum (a further 0.11% per annum rates increase). See page 6 of the Consultation Document for more detail.

Yes No

These ideas are not mutually exclusive, you can support more than one. These ideas are not included in the current rates increase of 5.99% in year one.

If you have any views on these ideas please comment below:

Thanks for sharing your views and helping to shape South Wairarapa

Water conservation

Council is considering ways to conserve water.

Option One: Do you support undertaking a feasibility study to investigate ways to reduce water usage or increase water storage? The study is estimated to cost \$50,000 (a further 0.38% per annum rates increase for the 2018/19 year only). See page 6 of the Consultation Document for more detail; or

Option Two: Do you support continuation of Council's current approach to water conservation i.e. encouraging users to reduce their water usage as outlined on page 6 of the Consultation Document?; or

Option Three: What other options would you like Council to investigate to conserve water in our district?

Select your preferred option:

Option One Option Two Option Three

Option Three:

If you have any views on these ideas please comment below:

Fees and charges

Do you have any comments about the proposed changes to fees and charges as outlined on page 14 of the Consultation Document?

Grants

If you are applying for a grant please complete the grant application form which is available on our website or at the addresses listed at the top of this form.

Other feedback

Council would like to hear any other feedback you have in relation to the content of the Consultation Document or any of the LTP supporting information or anything you think needs to be included that is not.

Please provide any other comments below:

see attached.

(Continue on another sheet if required)

23/04/2018

145

The plan that you have put together
for the South Waikato
is not bad; its terrible!

How can I help how can I be constructive?

1. When your plan highlights the fact that
for the next 30 years you are going to
find it nearly impossible to manage
and move forward with basic infrastructure.

2. Apart from your organisation's housekeeping;
you have ~~you have~~ no Ideas for
the future of our towns. There are more
creative and influential people living in
Featherston than ever before; they have Ideas.

Plus when Victoria's Architecture student made a project
of re-designing Featherston's public domain none
of the council took any of their good Ideas
and made them happen - Go back to it!

3. Your work culture is restrictive and dry.

The most constructive Idea if we will ever
achieve a great place is to dissolve your
entire Council Members, staff, processes and
policies. Those starting again fresh with
who wants to make a great and are
willing to take risks and find exceptions
to the rule - that is what is key to
making a great place

Best of luck

Renze Bijker

From: Jennie Mitchell- Group Manager Corporate Support
Sent: Thursday, 19 April 2018 12:01 p.m.
To: Suzanne Clark - Committee Secretary <Suzanne.Clark@swdc.govt.nz>
Subject: Submission re Mayor attending 75th Anniversary Commemorations to be held in Cowra, Australia

Good afternoon

Council submit to the LTP process to budget for Mayor Napier's attendance at the 75th Anniversary Commemorations to be held in Cowra, Australia in August 2019

From Council meeting 4.4.2018

From: Jennie Mitchell- Group Manager Corporate Support
Sent: Thursday, 19 April 2018 12:00 p.m.
To: Suzanne Clark - Committee Secretary <Suzanne.Clark@swdc.govt.nz>
Subject: Submission re Attendance at the LG conference in future years

Good afternoon

Council would like to submit to the LTP process to budget for up to two councillors plus the Mayor to attend the Local Government conference in future years.
From Council meeting 4.4.2018

145

SHARE YOUR VIEW ON OUR FUTURE

Feedback must be received by 4pm Monday 23 April 2018.

Please read the consultation document before providing your feedback. You can get your feedback to us in the following ways:

EMAIL ltp@swdc.govt.nz

ONLINE www.swdc.govt.nz

FAX (06) 306 9373

BY POST

South Wairarapa District Council
PO Box 6
Martinborough 5741

IN PERSON Drop this form to your local library or the Council office in Martinborough

Your name and feedback will be public documents. All other personal details will remain private.

NAME Jill Thomas

POSTAL ADDRESS

PHONE

RATEPAYER Urban Rural Commercial Non ratepayer

AGE: 15-24 25-34 35-44 45-54 55-64 65+

Yes I/we would like to speak to this submission:

SPEAKING PREFERENCE May 14th May 15th

Organisation:

(Only if authorised to submit on behalf of organisation, one submission per organisation)

Rates Affordability

Do you agree with the proposed overall average rates increase for the next 10 years, enabling the proposed expenditure outlined in this document?

Agree Disagree

If not what general rates increase do you support?

3% (inflation only) 5% Other 1.50%

If you ticked 'disagree' which activity areas do you think we should spend less on?

Governance and Advocacy

Future growth and development

Option One: Do you support Council's initiative to prepare a spatial plan for the South Wairarapa as outlined on page 4 of the Consultation Document? Cost: \$300,000 over 10 years. Impact on rates: 0.23% per annum increase; or

Option Two: Continue to allow growth in an unstructured way. This option would have no immediate impact on rates, but could result in higher rates in the future due to less efficient use of Council resources than could be achieved with planned development.

Select your preferred option:

Option One Option Two

If you have any views on this project please comment below:

Youth training and development

Option One: Do you support Council's initiative to provide grants to support youth training and development and to provide recreational activities as outlined on page 5 of the Consultation Document? Cost: \$75,000 per annum. Impact on rates: 0.57% per annum increase; or

Option Two: Status quo with no impact on rates.

Select your preferred option:

Option One Option Two

If you have any views on this project please comment below:

See additional submission

Promoting and enhancing our district

Option One: Do you support Council's initiative to promote and enhance our district as outlined on page 5 of the Consultation Document? Cost: 300,000 over 10 years. Impact on rates: 0.23% per annum increase; or

Option Two: Status quo with no impact on rates; or

Option Three: Proceed with annual expenditure at a level other than that proposed. Amount: \$

Select your preferred option:

Option One Option Two Option Three

If you have any views on this project please comment below:

Infrastructure for visitors

Option One: Do you support Council's initiative to provide more infrastructure for visitors (e.g. more public toilets, drinking fountains, motor caravan dumping stations, better rubbish and recycling facilities) as outlined on page 5 of the Consultation Document? Cost: \$50,000 per annum for 5 years. Impact on rates: 0.006% per annum increase; or

Option Two: Status quo with no impact on rates.

Select your preferred option:

Option One Option Two

If you have any views on this project please comment below:

Should come under same heading as promotion and enhancement of district

Sports coordination

Option One: Do you support central coordination of sport across the district as outlined on page 5 of the Consultation Document? Estimated cost of \$50,000 per annum (a further 0.38% per annum rates increase); or

Option Two: Status quo with no impact on rates.

Select your preferred option:

Option One Option Two

If you have any views on this project please comment below:

Reducing waste going to landfills

Council is considering the following changes, indicate which of the following you would support (costs not included in LTP budgets).

A Do you support provision of kerbside food waste collections? This service is estimated to cost \$73,000 per annum (a further 0.55% per annum rates increase). See page 6 of the Consultation Document for more detail.

Yes No

B Do you support provision of 240 litre wheelie bins for recycling? This service is estimated to cost \$32,000 per annum (a further 0.24% per annum rates increase). See page 6 of the Consultation Document for more detail.

Yes No

C Do you support provision of an e-waste service at transfer stations or an advertised collection service scheduled throughout the year? This service is estimated to cost \$7,000 per annum (a further 0.05% per annum rates increase). See page 6 of the Consultation Document for more detail.

Yes No

D Do you support provision of a recycling/recovery centre at a transfer station? This service is estimated to cost \$14,000 per annum (a further 0.11% per annum rates increase). See page 6 of the Consultation Document for more detail.

Yes No

These ideas are not mutually exclusive, you can support more than one. These ideas are not included in the current rates increase of 5.99% in year one.

If you have any views on these ideas please comment below:

Transfer to be more useable by having facilities for polystyrene packaging, used cooking oil, used batteries that are used in torches, radios and other appliances

Thanks for sharing your views and helping to shape South Wairarapa

Water conservation

Council is considering ways to conserve water.

Option One: Do you support undertaking a feasibility study to investigate ways to reduce water usage or increase water storage? The study is estimated to cost \$50,000 (a further 0.38% per annum rates increase for the 2018/19 year only). See page 6 of the Consultation Document for more detail; or

Option Two: Do you support continuation of Council's current approach to water conservation i.e. encouraging users to reduce their water usage as outlined on page 6 of the Consultation Document?; or

Option Three: What other options would you like Council to investigate to conserve water in our district?

Select your preferred option:

Option One Option Two Option Three

Option Three:

Encouragement to property owners to install water collecting tanks on established properties

If you have any views on these ideas please comment below:

Fees and charges

Do you have any comments about the proposed changes to fees and charges as outlined on page 14 of the Consultation Document?

No

Grants

If you are applying for a grant please complete the grant application form which is available on our website or at the addresses listed at the top of this form.

Other feedback

Council would like to hear any other feedback you have in relation to the content of the Consultation Document or any of the LTP supporting information or anything you think needs to be included that is not.

Please provide any other comments below:

See attached sheet

Addition to Submission

1. Based on the information supplied in your Long Term Plan Document you have an estimated surplus of \$5,659,459 which certainly more than covers the estimated cost of \$588,000 for a new wastewater in Greytown and leaves a large sum for the rest of the District.
2. Your estimations on the increased rates for the 2018/19 year are way out. We have a moderate property and your estimations are definitely out.
3. At the Greytown Meeting it was mentioned that North Road should be widened and a footpath added. The same applies to Wood Street up to Mole Street corner. There would be equally as much vehicular and foot traffic in this area if not more and definitely more residences. I took a trip down North Road, this would be an expensive exercise.
4. There was also discussion about facilities for the youth of Greytown and the disappointment on the non-provision of a Wheels Park that has been on the Agenda for about 10 years. I would like the District Council to explore the possibility of either purchasing or leasing the property on the north-west corner of Mole and Wood Streets. There is ample room for this to be developed, not too many neighbours to complain about noise, and not that far from the CBD, much better than using the Hub Area and other flat areas around our town.
5. Remedial work on existing footpaths needs to be done before any new work is completed.
6. No further borrowing of monies needs to happen, your rateable base is increasing each year, one needs to cut their cloth accordingly, good things can still happen.
7. You do not mention how much interest is paid out on money already borrowed, only on investments made throughout the year.
8. Do not borrow any money on the Martinborough wish list unless the Martinborough Ward is footing the cost. I, for one, am getting angst at paying out for others to benefit from. It will be an established fact that your next rates Invoice will be asking \$65.00 per week to reside in our residence. And what do I get for that \$65 is a street light, weekly rubbish pick up and a cracked footpath to walk on, sewerage disposal and water. Not great value for our money.

Let us see some progress around the District and not talk pie in the sky.

Thomas
20/04/2018.

145

ient

's initiative to prepare a
s outlined on page 4 of the
00 over 10 years. Impact on

h in an unstructured way.
impact on rates, but could
to less efficient use of Council
planned development.

ease comment below:

nt

initiative to provide grants to
t and to provide recreational
onsultation Document? Cost:
57% per annum increase; or

t on rates.

ase comment below:

omission

district

SHARE YOUR VIEW ON OUR FUTURE

Feedback must be received by 4pm Monday 23 April 2018.

Please read the consultation document before providing your feedback. You can get your feedback to us in the following ways:

EMAIL ltf@swdc.govt.nz

ONLINE www.swdc.govt.nz

FAX (06) 306 9373

BY POST

South Wairarapa District Council
PO Box 6
Martinborough 5741

IN PERSON Drop this form to your local library or the Council office in Martinborough

Your name and feedback will be public documents. All other personal details will remain private.

NAME Ed + Juliet Cooke

POSTAL ADDRESS _____

EMAIL _____

PHON _____

Future growth and development

Option One: Do you support Council's initiative to prepare a spatial plan for the South Wairarapa as outlined on page 4 of the Consultation Document? Cost: \$300,000 over 10 years. Impact on rates: 0.23% per annum increase; or

Option Two: Continue to allow growth in an unstructured way. This option would have no immediate impact on rates, but could result in higher rates in the future due to less efficient use of Council resources than could be achieved with planned development.

Select your preferred option:

Option One Option Two

If you have any views on this project please comment below:

Youth training and development

Option One: Do you support Council's initiative to provide grants to support youth training and development and to provide recreational activities as outlined on page 5 of the Consultation Document? Cost: \$75,000 per annum. Impact on rates: 0.57% per annum increase; or

Option Two: Status quo with no impact on rates.

Select your preferred option:

Option One Option Two

If you have any views on this project please comment below:

Promoting and enhancing our district

Option One: Do you support Council's initiative to promote and enhance our district as outlined on page 5 of the Consultation Document? Cost: 300,000 over 10 years. Impact on rates: 0.23% per annum increase; or

Option Two: Status quo with no impact on rates; or

Option Three: Proceed with annual expenditure at a level other than that proposed. Amount: \$ _____

Select your preferred option:

Option One Option Two Option Three

If you have any views on this project please comment below:

Infrastructure for visitors

Option One: Do you support Council's initiative to provide more infrastructure for visitors (e.g. more public toilets, drinking fountains, motor caravan dumping stations, better rubbish and recycling facilities) as outlined on page 5 of the Consultation Document? Cost: \$50,000 per annum for 5 years. Impact on rates: 0.006% per annum increase; or

Option Two: Status quo with no impact on rates.

Select your preferred option:

Option One Option Two

If you have any views on this project please comment below:

RATEPAYER Urban Rural Commercial Non ratepayer

AGE: 15-24 25-34 35-44 45-54 55-64 65+

No Yes I/we would like to speak to this submission:

SPEAKING PREFERENCE May 14th May 15th

Organisation: _____

(Only if authorised to submit on behalf of organisation, one submission per organisation)

Rates Affordability

Do you agree with the proposed overall average rates increase for the next 10 years, enabling the proposed expenditure outlined in this document?

Agree Disagree

If not what general rates increase do you support?

3% (inflation only) 5% Other _____

If you ticked 'disagree' which activity areas do you think we should spend less on?

1/ The rate of inflation has been, and is, less than 3%pa. The 3% is treasury target only.

2/ We cannot say (and yendo next) what the rates are going to be in a 10 year period so can not agree or disagree. - RO can only disagree for now.

Sports coordination

Option One: Do you support central coordination of sport across the district as outlined on page 5 of the Consultation Document? Estimated cost of \$50,000 per annum (a further 0.38% per annum rates increase); or

Option Two: Status quo with no impact on rates.

Select your preferred option:

Option One Option Two

If you have any views on this project please comment below:

Reducing waste going to landfills

Council is considering the following changes, indicate which of the following you would support (costs not included in LTP budgets).

A Do you support provision of kerbside food waste collections? This service is estimated to cost \$73,000 per annum (a further 0.55% per annum rates increase). See page 6 of the Consultation Document for more detail.

Yes No

B Do you support provision of 240 litre wheelie bins for recycling? This service is estimated to cost \$32,000 per annum (a further 0.24% per annum rates increase). See page 6 of the Consultation Document for more detail.

Yes No

C Do you support provision of an e-waste service at transfer stations or an advertised collection service scheduled throughout the year? This service is estimated to cost \$7,000 per annum (a further 0.05% per annum rates increase). See page 6 of the Consultation Document for more detail.

Yes No

D Do you support provision of a recycling/recovery centre at a transfer station? This service is estimated to cost \$14,000 per annum (a further 0.11% per annum rates increase). See page 6 of the Consultation Document for more detail.

Yes No

These ideas are not mutually exclusive, you can support more than one. These ideas are not included in the current rates increase of 5.99% in year one.

If you have any views on these ideas please comment below:

Despite the Pillars & Community Outcomes on p.3, the Council takes absolutely no notice of sustaining & exercising guardianship over Greytown's best horticultural soils. Why not intensify the subdivision*

Thanks for sharing your views and helping to shape South Wairarapa

16 SOUTH WAIRARAPA DISTRICT COUNCIL LONG TERM PLAN 2018-2028

* in the Westec subdivision, and leave the existing apple and pear orchard, on prime soil types, to grow fruit, not houses -

Water conservation

146

Council is considering ways to conserve water.

Option One: Do you support undertaking a feasibility study to investigate ways to reduce water usage or increase water storage? The study is estimated to cost \$50,000 (a further 0.38% per annum rates increase for the 2018/19 year only). See page 6 of the Consultation Document for more detail; or

Option Two: Do you support continuation of Council's current approach to water conservation i.e. encouraging users to reduce their water usage as outlined on page 6 of the Consultation Document?; or

Option Three: What other options would you like Council to investigate to conserve water in our district?

Select your preferred option:

Option One Option Two Option Three

Option Three:

If you have any views on these ideas please comment below:

Fees and charges

Do you have any comments about the proposed changes to fees and charges as outlined on page 14 of the Consultation Document?

Grants

If you are applying for a grant please complete the grant application form which is available on our website or at the addresses listed at the top of this form.

Other feedback

Council would like to hear any other feedback you have in relation to the content of the Consultation Document or any of the LTP supporting information or anything you think needs to be included that is not.

Please provide any other comments below:

Depreciation vs Maintenance Funding - We don't understand your differentiation of terms. Surely the Council must put aside money in the different categories of spending each year for future maintenance/renewal. Otherwise, what happens in the year that there are major water pipe issues, sewage ponds leaking badly, & horrific accidents severely damaging roads & bridges? Our understanding is that depreciation funding takes care of maintenance & renewal so that major impacts on rates in future years is avoided.

(Continue on another sheet if required)

South Wairarapa District Council

2018/28 Long Term Plan

Grant Application Form

Email to: ltp@swdc.govt.nz before 4 pm, 23 April 2018

1. ORGANISATION DETAILS

Name of organisation: Wings Over Wairarapa Community Trust
Physical address: C/O Hood Aerodrome
South Road
Masterton

Postal address: PO Box 450
Masterton
5840

Contact Person: Jennifer Gasson	Phone No (Day): 0220903864
Email: info@wings.org.nz	Mobile No: 0220903864
	Phone No (After hours): 0220903864

When the organisation was formed and what are its aims and objectives?

The Wings Air Show has been running since 1999 but the current organisation – the Wings Over Wairarapa Community Trust was formed in 2011. The organisation’s aims and objectives are:

- Maintain and grow premier event in order to contribute to the Wairarapa region’s economy
- Profile Wairarapa both nationally and internationally
- Promote Hood as the centre of aviation in the region
- Educate the public about aviation and its history and future
- Support initiatives designed to develop Hood Aerodrome to the benefit of current and potential users

Total number of members in your organisation?	8 Trustees
How many full-time equivalent people work in your organisation?	2
How many volunteers work in your organisation?	300
Date of last AGM?	2017
Are you GST registered? Y	GST No: 108-113-715

Officers of organisation	
Chair: Bob Francis	Phone No: 027 444 7677
Secretary: Sam Orsborn	Phone No: 027 448 4586
Treasurer: Sam Orsborn	Phone No: 027 448 4586

2. PROJECT OVERVIEW

Specific reason for grant application (e.g. upgrade to facilities/purchase of equipment/one-off event):

Wings Over Wairarapa will be running their 20th celebration of running air shows in the Wairarapa on 22, 23 and 24 February 2019. We would like to celebrate the Wairarapa region at the show which will feature historical aircraft right through to the future of aviation.

As you can imagine the cost of running an air show are high and we are looking for financial support of the event which brings over 24,000 people to the region. This will enable us to help keep the ticket prices at as reasonable a price as possible.

Where and when will the activity/event take place or what is the anticipated completion date of the project (please note funds cannot be allocated retrospectively)?

Wings Over Wairarapa will be running their 20th celebration of running air shows in the Wairarapa on 22, 23 and 24 February 2019.

Why should South Wairarapa District Council (SWDC) support this project/event?

Wings Over Wairarapa brings over 24,000 people to the Wairarapa and is a key event in promoting the region nationally and internationally. The event brings an economic boost to the entire region filling accommodation and restaurants as far south as Featherston and up to Eketahuna. It truly is a region wide event.

<p>Who will benefit from these funds and in what way?</p> <p>Wings Over Wairarapa offers benefits to the following people / groups:</p> <ul style="list-style-type: none"> • Employs a small number of staff • Fundraises for several service organisations including South Wairarapa Rotary as they work doing car parking for the event. Wings pays them for this service • Offers opportunities for people to develop skills in volunteer roles • Profiles the region nationally and internationally which benefits the entire region • Accommodation providers, retailers, restaurant and café owners benefit from the increased visitors • 24,000 people experience the region • National and international media coverage
<p>Would you like to speak in support of your application at a meeting of the South Wairarapa District Council? Yes</p> <p><i>Submission hearings will be held on 14 & 15 May 2018 at the Council Chambers, Martinborough</i></p>

3. FINANCIALS

Funding requirements	
Total cost of project	\$1,000,000
Your organisation's contribution	\$550,000 – Ticket Sales \$150,000 – Business Sponsorship \$90,000 – Merchandise / Hospitality
Other outside funding (please supply brief details)	\$200,000 – Other Grants
Amount applied for in this application	\$10,000
Shortfall (please provide brief details of how will balance be found)	\$550,000 – Ticket Sales \$150,000 – Business Sponsorship \$90,000 – Merchandise / Hospitality \$200,000 – Other Grants
Project income (if applicable), e.g. generated from sales to public	\$550,000 – Ticket Sales \$150,000 – Business Sponsorship \$90,000 – Merchandise / Hospitality
Is organisation a registered charity?	Yes
Have you applied to SWDC for funding before?	Yes
If yes, when, for what purpose and how much was granted?	Operation of previous air shows - \$5000 in 2012, 2014 and 2016

Bank account details	
Name of bank:	ANZ
Account name:	Wings Over Wairarapa Community Trust.
Account No:	010-682025262600

4. Declarations

We agree to comply with requests from an officer or councillor from SWDC for additional information in relation to this application.

Statement to comply with the Provisions of the Privacy Act 1993

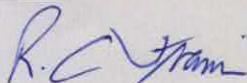
The personal information above is collected and will be held by SWDC for the purpose of considering your application for financial assistance. You have the right of access to, and correction of, personal information about you, that we hold.

Authorisation

- I certify that the information provided in this application form is true and correct to the best of my knowledge.
- I have the authority to make the application on behalf of the organisation.
- I agree that the necessary documentation listed below is attached to this application.
- I confirm that we will complete and return a grant accountability form within two months of the project being completed.
- The organisation will keep receipts and a record of all expenditure for 7 years.
- Any unspent funds will be returned to SWDC.
- All expenditure will be accounted for in the Grant Accountability Form.

Signatory One

Signed:



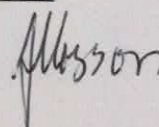
Full name: Robert Charles Francis

Designation: Chairman

Date: 21st April 2018

Signatory Two

Signed:



Full name: Jennifer Leigh Casson

Designation: Event Manager

Date: 21/4/18

Supporting documentation required for this application	
<ul style="list-style-type: none"> • Most recent annual accounts including notes and review/audit report. 	<input checked="" type="checkbox"/>
<ul style="list-style-type: none"> • Income and expenditure statement for part year and inaugural minutes (if organisation has been operating for less than 12 months) 	<input type="checkbox"/>

South Wairarapa District Council 2018/28 Long Term Plan Grant Application

Conditions of Grant:

Residential eligibility:

- Organisations, Charitable Trusts & Incorporated Societies must currently operate within South Wairarapa or have a broader Wairarapa-wide benefit.

Application forms:

- Will be accepted either in electronic or hard copy form.
- A separate application must be made for each project or event.

Annual grant:

- All applications are considered by the South Wairarapa District Council and awarded at their discretion and on the merits of each project for the greater wellbeing of the South Wairarapa community.
- There is no maximum amount for any one grant, however, the SWDC's resources are limited and funding support is not guaranteed on an on-going basis.
- Applicants will need to re-apply each year for consideration of funding to continue.
- There is a 12-month time limit for uplifting the funds from the date of notification of approval.
- After 12 months, if funds have not been uplifted the grant will be rescinded and a new application must be completed and submitted for consideration.
- Unused funds must be returned to SWDC.

Supporting material:

- Organisations are required to provide copies of their most recent annual report and financial statements that have either been audited or reviewed by a suitably qualified person.
- Within two months of completion of the project or event, applicants are required to send to the SWDC a completed Grant Accountability form.

Payments:

- GST registered applicants must provide a tax invoice to enable the grant to be paid